

Heat shrinkable transition joint
with screw connectors and solderless earthing wire connection

Universally suitable for transition from mass-impregnated paper cables to polymeric-insulated cables made of PVC, PE and XLPE, e.g. NAKLEY, N(A)KBA on N(A)YY. With mechanical connectors with shear heads bolts suitable for aluminium or copper cables.



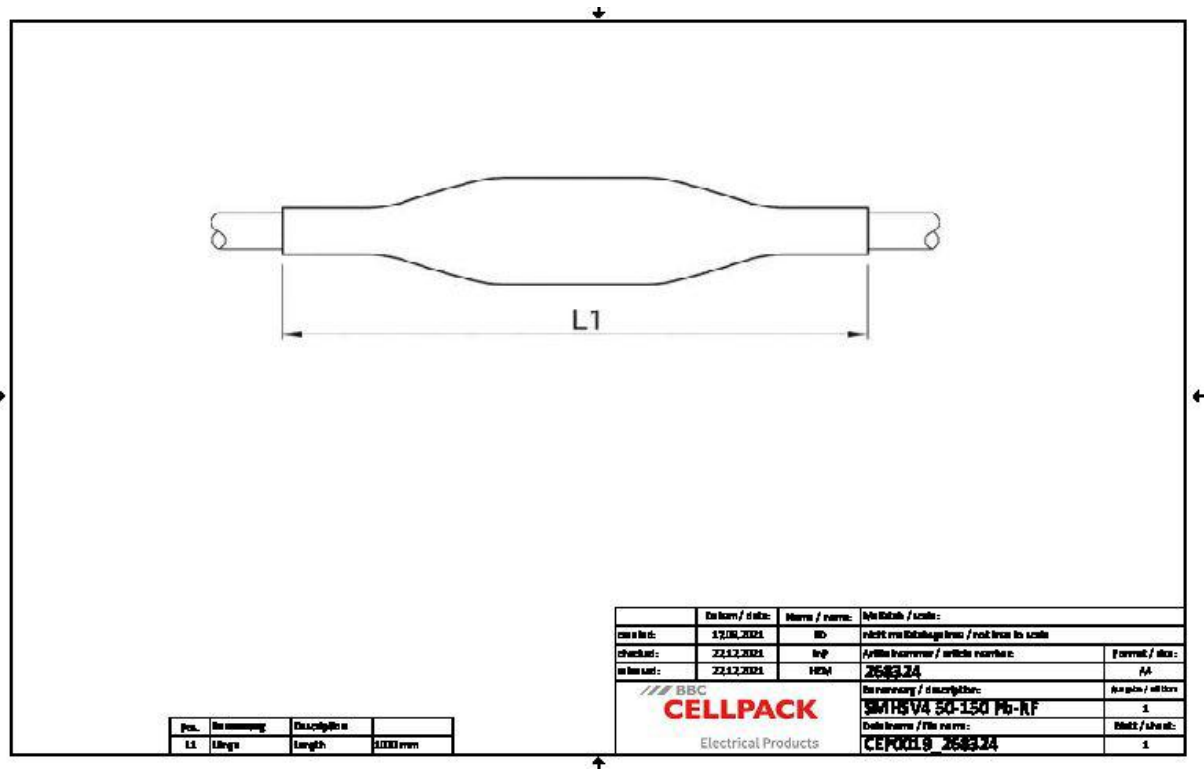
Product description

Article name	SMHSV4 50-150 Pb-RF
Article number	268324

Characteristics
Compact dimensions
Wide conductor and cross-section range
Resistant to chemical agents
Resistant to alkaline earth elements
Stabilized against UV rays
Free from paint-wetting inhibiting substances
Halogen-free
Transversely waterproof
High electrical insulating values
High mechanical strength

Applications
Indoor
Outdoor
Underground
Water
Installation ducts
Ductwork

Technical data



Article name	SMHSV4 50-150 Pb-RF
Article number	268324
Voltage levels	U0/U (Um) 0,6/1 (1,2) kV
Test standards	EN 50393
Length L1	1000 mm
Nominal cross section Polymeric cable unarmoured per conductor 4x min	50 mm²
Nominal cross section Polymeric cable unarmoured per conductor 4x max	150 mm²
Nominal cross section Mass-impregnated paper cable NAKLEY per conductor 3x min	50 mm²
Nominal cross section Mass-impregnated paper cable NAKLEY per conductor 3x max	150 mm²
Nominal cross section Mass-impregnated paper cable N(A)KBA per conductor 4x min	50 mm²
Nominal cross section Mass-impregnated paper cable N(A)KBA per conductor 4x max	120 mm²

Logistics data

Article name	SMHSV4 50-150 Pb-RF
Article number	268324
Delivery scope	Outer sleeve
	Inner sleeves
	Core insulating tubes
	Earthing wire
	Pressure spring
	Spreader cap
	Screw connectors with shear head bolts
	Cleaning tissue
	Emery cloth
	Assembly instructions
Shelf life description	Unlimited shelf life
Country of origin	Germany
Customs tariff number	39173900
EAN/GTIN	4010311148281

Packaging data

Alternative unit of measure	Bag1	Pal. EU
Base quantity	1	30
Base unit of measure	Piece	Piece
Lenght (mm)	1018	1200
Width (mm)	195	800
Height (mm)	110	770
Net weight (kg)	1.601	48.03
Gross weight (kg)	1.601	77.03