

3-core straight-through joint  
for connecting with three 1-core polymeric cables up to 7.2 kV

Straight-through joints SMHSV3-1...MS6 are suitable for connecting 3-core polymeric cables (PVC, PE, XLPE, EPR) without outer semi-conductive layer with three 1-core polymeric cables (PVC, PE, XLPE, EPR). They allow the connection of cables with different cross sections, conductive materials and structure. With screw connectors.



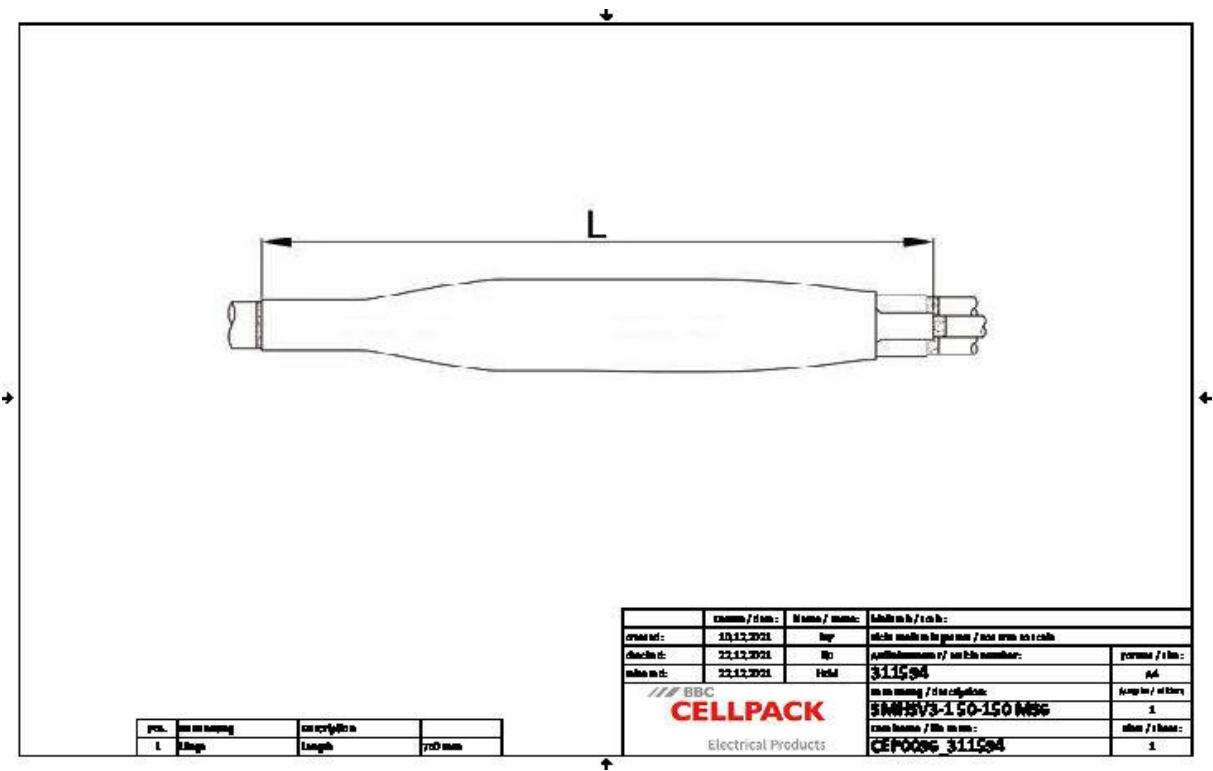
Product description

Article name	SMHSV3-1 50-150 MS6
Article number	311594

Characteristics
Compact dimensions
Wide cross-section range
Ready for immediate operation
High mechanical strength
Quick, safe and easy assembly
Suitable for a wide range of applications due to integrated screw connector

Applications
Indoor
Outdoor
Underground
Water
Installation ducts

Technical data



Article name	SMHSV3-1 50-150 MS6
Article number	311594
Voltage levels	U0/U (Um) 3,6/6 (7,2) kV - 3,8/6,6 (7,2) kV
Length L	750 mm
Nominal cross section Polymeric cable unarmoured / armoured min	50 mm²
Nominal cross section Polymeric cable unarmoured / armoured max	150 mm²

## Logistics data

Article name	SMHSV3-1 50-150 MS6
Article number	311594
Delivery scope	Thick wall heat shrinkable outer tube with hot melt adhesive
	Inner sheath sleeve
	Copper braid tape
	Screw connector
	Assembly material
	Assembly instructions
Shelf life description	Unlimited shelf life
Country of origin	Germany
Customs tariff number	39173900
EAN/GTIN	4010311159355

## Packaging data

Alternative unit of measure	Carton	Pal. OW
Base quantity	1	25
Base unit of measure	Piece	Piece
Length (mm)	730	1200
Width (mm)	231	800
Height (mm)	188	1130
Net weight (kg)	2.282	57.05
Gross weight (kg)	2.282	75.25