

Heat shrinkable straight-through joint
with screw connectors for unarmoured polymeric cables and conductors

Universally suitable for connecting polymeric cables or conductors insulated with PVC, PE and XLPE (e.g. N(A)YY, NYM, TT). With screw connectors with grub screw, suitable for aluminium and copper conductors.



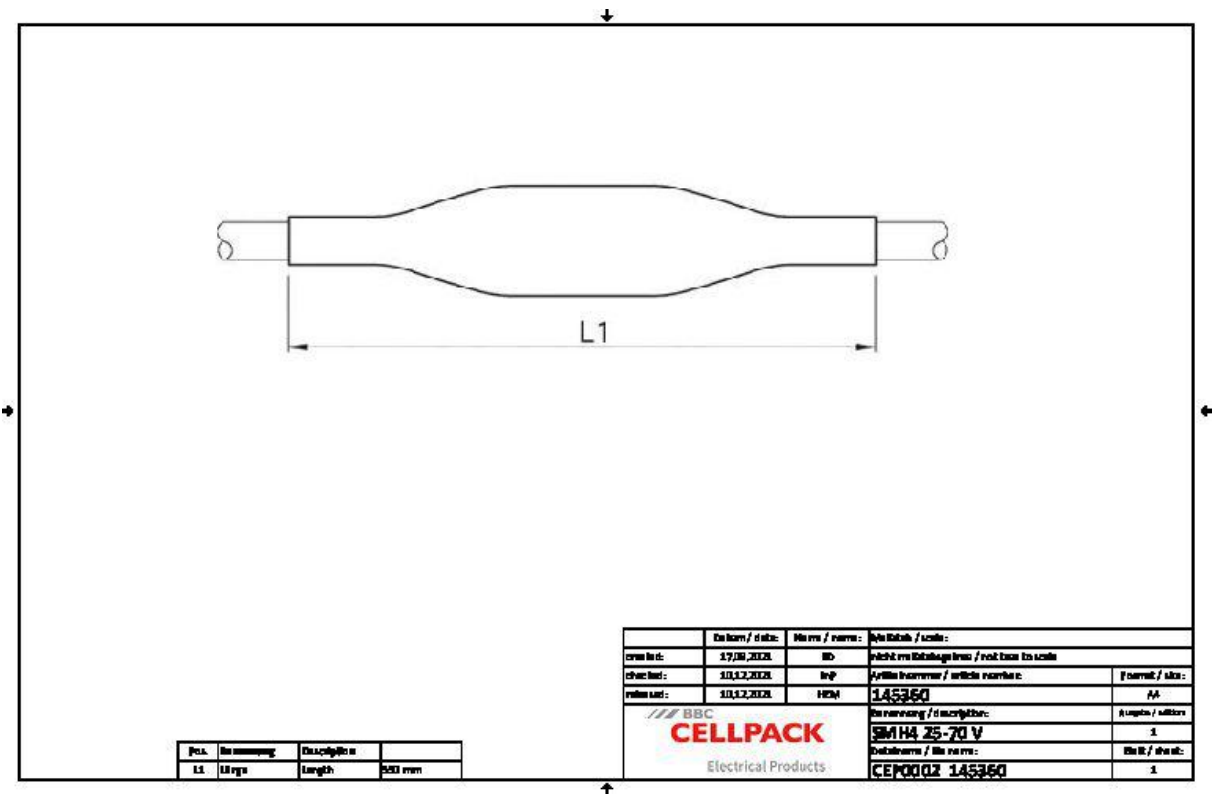
Product description

| | |
|----------------|---|
| Article name | SMH4 25-70 V |
| Article number | 145360 |
| Notes | With screw connectors with shear head bolts |

| |
|---|
| Characteristics |
| Compact dimensions |
| Wide conductor and cross-section range |
| Resistant to chemical agents |
| Resistant to alkaline earth elements |
| Stabilized against UV rays |
| Free from paint-wetting inhibiting substances |
| Halogen-free |
| Transversely waterproof |
| High electrical insulating values |
| High mechanical strength |

| |
|--------------------|
| Applications |
| Indoor |
| Outdoor |
| Underground |
| Water |
| Installation ducts |
| Ductwork |

Technical data



| | |
|---|---|
| Article name | SMH4 25-70 V |
| Article number | 145360 |
| Voltage levels | U0/U (Um) 0,6/1 (1,2) kV |
| Test standards | EN 50393 |
| Article notes | With screw connectors with shear head bolts |
| Length L1 | 550 mm |
| Nominal cross section Polymeric cable unarmoured per conductor 4x min | 25 mm² |
| Nominal cross section Polymeric cable unarmoured per conductor 4x max | 70 mm² |

Logistics data

| | |
|------------------------|-----------------------|
| Article name | SMH4 25-70 V |
| Article number | 145360 |
| Delivery scope | Outer sleeve |
| | Inner sleeves |
| | Screw connector |
| | Allen key |
| | Cleaning tissue |
| | Emery cloth |
| | Assembly instructions |
| Shelf life description | Unlimited shelf life |
| Country of origin | Germany |
| Customs tariff number | 39173900 |
| EAN/GTIN | 4010311020532 |

Packaging data

| | | |
|-----------------------------|-------|---------|
| Alternative unit of measure | Bag1 | Pal. EU |
| Base quantity | 1 | 100 |
| Base unit of measure | Piece | Piece |
| Length (mm) | 606 | 1200 |
| Width (mm) | 166 | 800 |
| Height (mm) | 120 | 770 |
| Net weight (kg) | 0.638 | 63.8 |
| Gross weight (kg) | 0.638 | 92.8 |