

Gel straight-through joint
without connection block

Universally suitable for connecting all polymeric cables and conductors (e.g. N(A)YY, NYM, H05), cross section range from 1.5 mm² to 25 mm². Suitable for aluminium and copper conductors.



Product description

Article name	EASYCELL 5
Article number	360400
Copyright	EASYCELL is a registered trademark of BBC Cellpack GmbH

Characteristics

- Connector area completely sealed by gel
- Re-accessible and ready for immediate operation
- Multiple type of connectors can be used, e. g. terminal strips, push wire connectors, mechanical blocks and c-crimp connectors

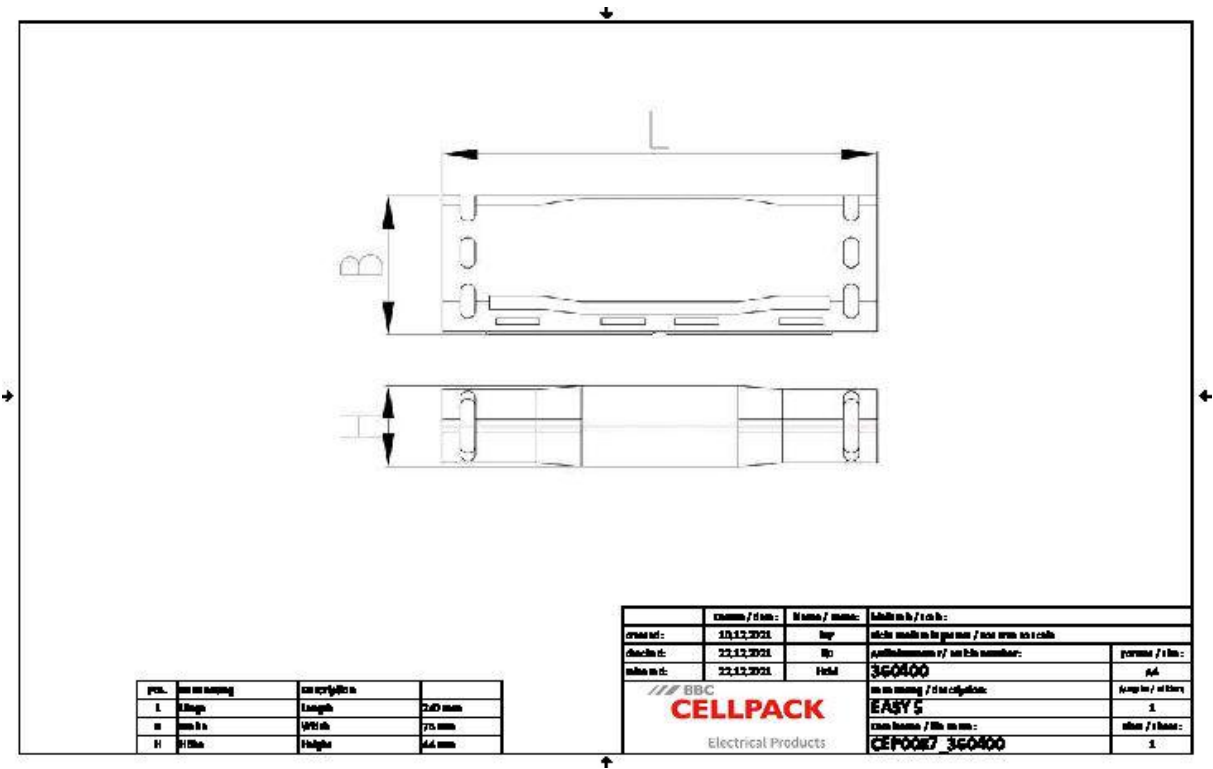
High-quality shockproof plastic shells, flame retardant and UV-resistant

Quick, safe and easy assembly

Applications

- Indoor (Laying in buildings and on cable racks)
- Outdoor
- Underground
- Water (according to test standard)

Technical data



Article name	EASYCELL 5
Article number	360400
Voltage levels	U0/U (Um) 0,6/1 (1,2) kV
Test standards	EN 50393
	EN 60695-2-11
Housing type	5
Number of housing	1 Pieces
Length L	240 mm
Width B	75 mm
Heigth H	44 mm
Nominal cross section Polymeric cable unarmoured per conductor 3x min	16 mm²
Nominal cross section Polymeric cable unarmoured per conductor 3x max	25 mm²
Nominal cross section Polymeric cable unarmoured per conductor 4x min	16 mm²
Nominal cross section Polymeric cable unarmoured per conductor 4x max	25 mm²
Nominal cross section Polymeric cable unarmoured per conductor 5x min	16 mm²
Nominal cross section Polymeric cable unarmoured per conductor 5x max	25 mm²
Diameter cable min	19 mm
Diameter cable max	28 mm

Logistics data

Article name	EASYCELL 5
Article number	360400
Delivery scope	Gel straight-through joint
	Spacers
	Cable ties
	Assembly instructions
Shelf life description	Unlimited shelf life
Country of origin	Italy
Customs tariff number	85369010
EAN/GTIN	4010311174594

Packaging data

Alternative unit of measure	Case	Carton	Pal. OW
Base quantity	1	30	540
Base unit of measure	Piece	Piece	Piece
Lenght (mm)	307	410	1200
Width (mm)	92	380	800
Height (mm)	57	370	1300
Net weight (kg)	0.598	17.94	322.92
Gross weight (kg)	0.598	18.24	341.12