

Gel straight-through joint
with connection block

Universally suitable for connecting all polymeric cables and conductors (e.g. N(A)YY, NYM, H05), cross section range from 1.5 mm² to 25 mm². Suitable for aluminium and copper conductors.



Product description

Article name	EASYCELL 3 V
Article number	389677
Optional accessory	EASYCELL® Strain relief, available for connecting joints from 6 mm² to 25 mm² (EASYCELL 4 V, EASYCELL 5 V)
Copyright	EASYCELL is a registered trademark of BBC Cellpack GmbH

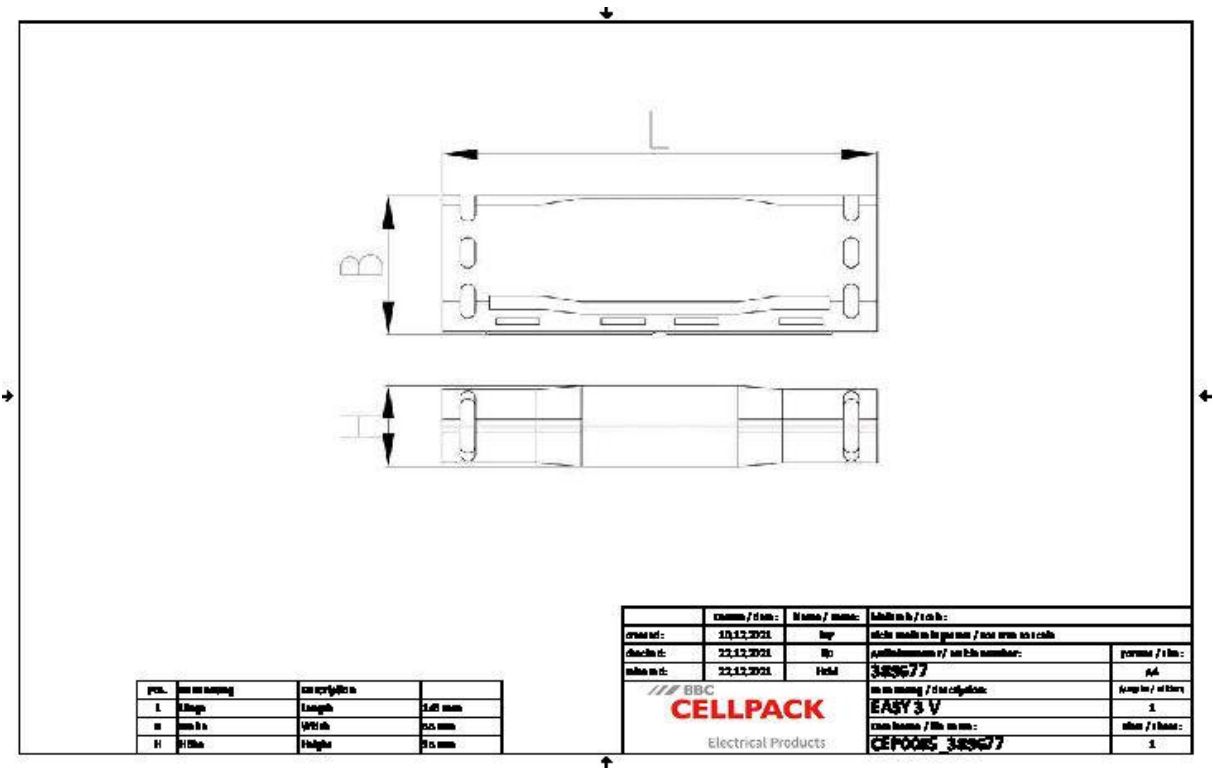
Characteristics

Connector area completely sealed by gel
Re-accessible and ready for immediate operation
Multi range one-piece connection block
High-quality shockproof plastic shells, flame retardant and UV-resistant
Quick, safe and easy assembly

Applications

Indoor (Laying in buildings and on cable racks)
Outdoor
Underground
Water (according to test standard)

Technical data



Article name	EASYCELL 3 V
Article number	389677
Voltage levels	U0/U (Um) 0,6/1 (1,2) kV
Test standards	EN 50393
	EN 60695-2-11
Housing type	3
Number of housing	1 Pieces
Connector type	Connection block
Length L	146 mm
Width B	55 mm
Heigth H	35 mm
Nominal cross section Polymeric cable unarmoured per conductor 3x min	1.5 mm ²
Nominal cross section Polymeric cable unarmoured per conductor 3x max	6 mm ²
Nominal cross section Polymeric cable unarmoured per conductor 4x min	1.5 mm ²
Nominal cross section Polymeric cable unarmoured per conductor 4x max	6 mm ²
Nominal cross section Polymeric cable unarmoured per conductor 5x min	1.5 mm ²
Nominal cross section Polymeric cable unarmoured per conductor 5x max	6 mm ²

Logistics data

Article name	EASYCELL 3 V
Article number	389677
Delivery scope	Gel straight-through joint
	Connection block
	Allen key
	Cable ties
	Assembly instructions
Shelf life description	Unlimited shelf life
Country of origin	Italy
Customs tariff number	85369010
EAN/GTIN	4010311186948

Packaging data

Alternative unit of measure	Case	Carton	Pal. OW
Base quantity	1	80	1440
Base unit of measure	Piece	Piece	Piece
Lenght (mm)	195	410	1200
Width (mm)	67	380	800
Height (mm)	47	370	1300
Net weight (kg)	0.237	18.96	341.28
Gross weight (kg)	0.237	19.24	359.48