

Gel box

with WAGO COMPACT Splicing Connectors

Gel filled housings for easy, fast and safe moisture protection of WAGO COMPACT Splicing Connectors



Product description

| | |
|----------------|--|
| Article name | EASY-PROTECT 413 |
| Article number | 410357 |
| Notes | Not reusable |
| Copyright | WAGO is a registered trademark of WAGO Verwaltungsgesellschaft mbH |

Characteristics

Protects the splicing connector against moisture and water ingress according to IPX8

VDE type-tested system according to EN 60998-2 for approval in conjunction with WAGO COMPACT conjunction with WAGO COMPACT Splicing Connectors 221

Rigid, label-free and silicone-free gel

UV-resistant housing, robust and re-accessible housing

Quick, safe and easy assembly

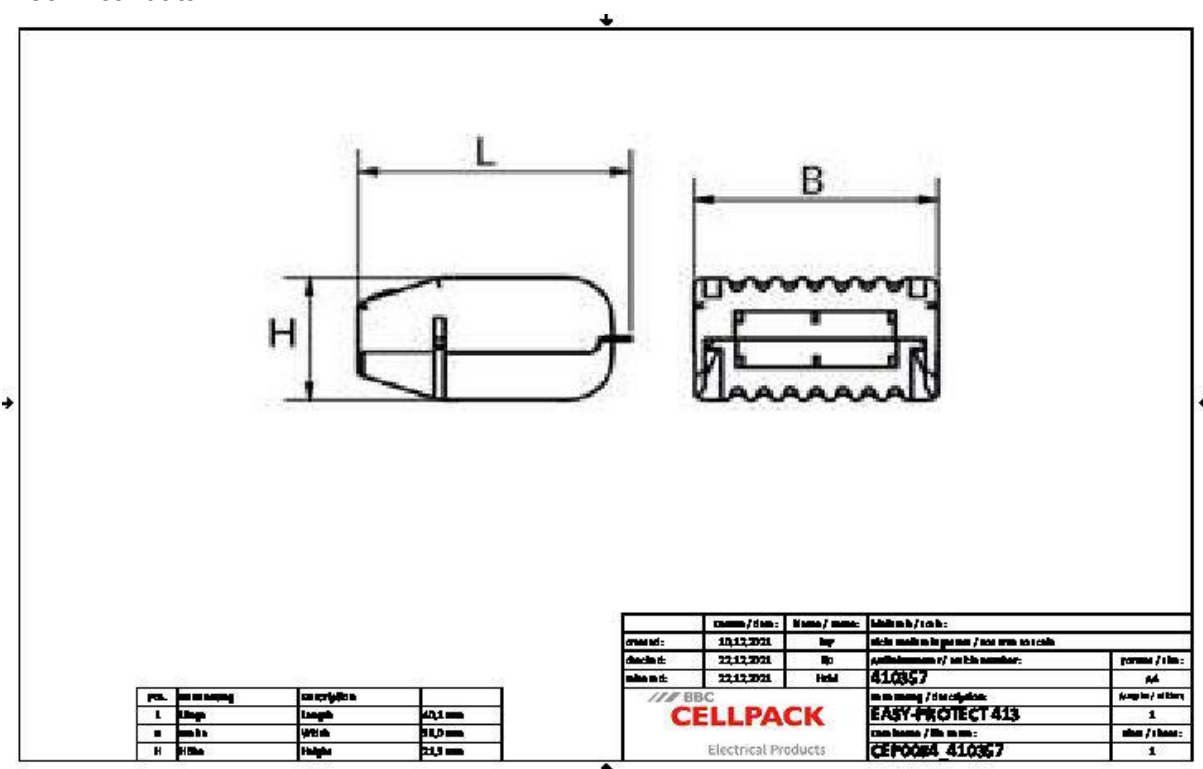
Ready-to-use

Applications

Indoor and Outdoor

Can be used in the low-voltage range without an additional housin

Can be used in the low-voltage range with additional housing (double insulation / observe protection class II)



| | |
|---|-------------|
| Ambient temperature (operation) | 85 °C |
| Ambient temperature (operation) (associated standard) | IEC 60998-2 |
| Operating temperature range max | 105 °C |
| Operating temperature range (associated standard) | IEC 60998-2 |
| Dielectric strength | ≥ 15 kV/mm |
| Dielectric strength (associated standard) | IEC 60243-1 |

Logistics data

| | |
|------------------------|--|
| Article name | EASY-PROTECT 413 |
| Article number | 410357 |
| Delivery scope | Pre-filled gel box |
| | WAGO COMPACT Splicing Connector type 221 |
| | EASY-PROTECT 413: 1x221-613 |
| Shelf life description | Unlimited shelf life |
| Storage temperatur max | 40 °C |
| Storage temperatur min | 0 °C |
| Country of origin | Italy |
| Customs tariff number | 85369010 |
| EAN/GTIN | 4010311189833 |

Packaging data

| Alternative unit of measure | Case | Carton | Pal. OW |
|-----------------------------|-------|--------|---------|
| Base quantity | 1 | 50 | 2500 |
| Base unit of measure | Piece | Piece | Piece |
| Lenght (mm) | 200 | 340 | 1200 |
| Width (mm) | 80 | 260 | 800 |
| Height (mm) | 30 | 200 | 1150 |
| Net weight (kg) | 0.04 | 2 | 100 |
| Gross weight (kg) | 0.04 | 2.2 | 120 |