

Elbow separable connector

for polymeric cables for outer cone system terminals type A

Cellplux elbow separable connectors CWS are suitable for connecting all polymeric- insulated 1-core cables (PVC, PE, XLPE, EPR), with different types of semiconductive layers (graphite-coated or strippable) and screen design (wire or tape screen), to switching equipment and transformers having an outer cone system type A, up to maximum network voltage of 24 kV in accordance with EN 50180 and EN 50181.



Product description

Article name	CWS 250A 24kV 70-150 M EGA
Article number	293792
Notes	Separable connectors for alternative cross-sections and for class 5 conductors on request
Optional accessory	EGA earthing kit for cables with tape screen (see Connecting technology)

Characteristics

With capacitive measuring point for voltage checking
Individually tested

Outer semi-conductive layer made of semi-conductive EPDM provides protection from exposed electrical parts

Cable sheath insulation fault test may be performed while under voltage

For both copper and aluminium conductors

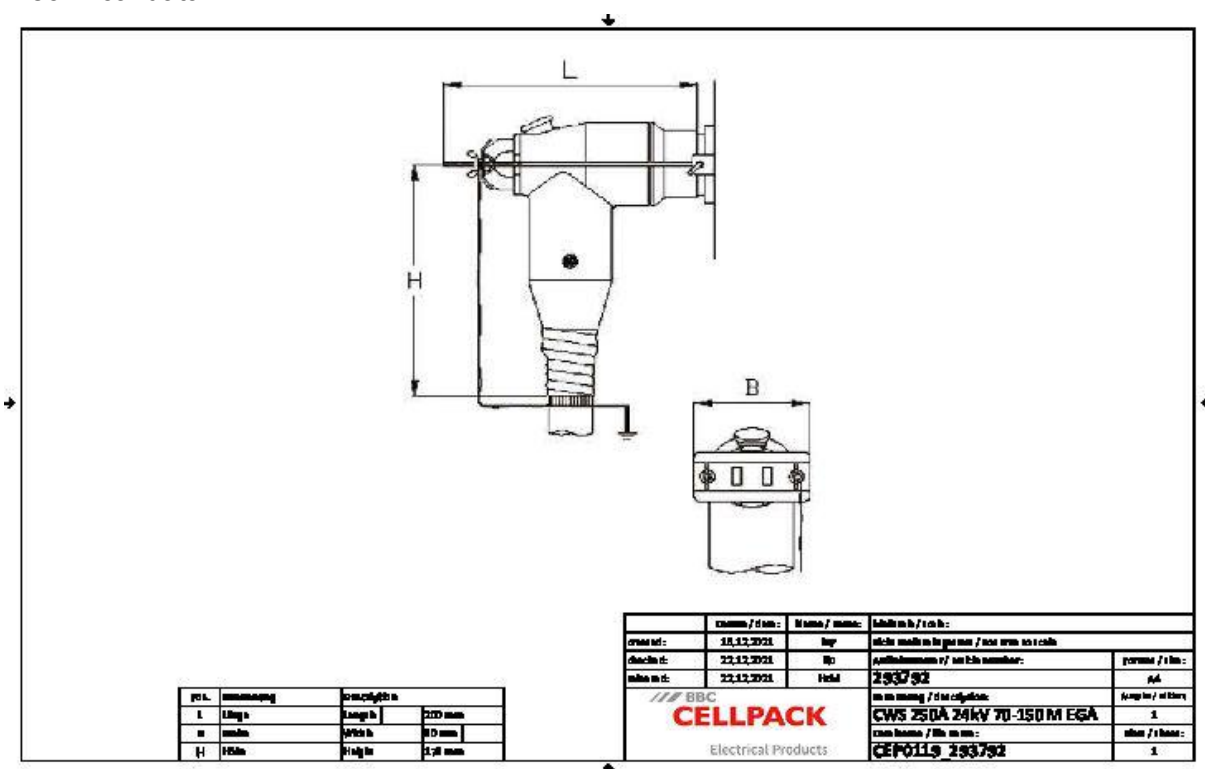
Quick, safe and easy assembly

Suitable for a wide range of applications due to integrated screw cable lug

Applications

Indoor

Technical data



Article name	CWS 250A 24kV 70-150 M EGA
Article number	293792
Voltage levels	U0/U (Um) 6/10 (12) kV - 12,7/22 (24) kV
Test standards	CENELEC HD 629.1
Length L	200 mm
Width B	80 mm
Height H	178 mm
Diameter over core insulation after removal of the outer conductive layer min	19.9 mm
Diameter over core insulation after removal of the outer conductive layer max	28.5 mm
Nominal cross section 12 kV min	120 mm ²
Nominal cross section 12 kV max	150 mm ²
Nominal cross section 17,5 kV min	95 mm ²
Nominal cross section 17,5 kV max	150 mm ²
Nominal cross section 24 kV min	70 mm ²
Nominal cross section 24 kV max	150 mm ²

Logistics data

Article name	CWS 250A 24kV 70-150 M EGA
Article number	293792
Delivery scope	Set of 3 separable connectors
	Silicone field control elements
	Earthing set
	Assembly material
	Screw cable lugs for main conductor
	Assembly instructions
Shelf life description	Unlimited shelf life
Country of origin	Germany
Customs tariff number	85479000
EAN/GTIN	4010311151915

Packaging data

Alternative unit of measure	Carton	Pal. OW
Base quantity	1	64
Base unit of measure	Piece	Piece
Length (mm)	379	1200
Width (mm)	289	800
Height (mm)	118	1130
Net weight (kg)	3.08	197.12
Gross weight (kg)	3.08	215.32