

Connecting element up to 24 kV
for separable connectors type CWS and type CGS system terminals type A

The connecting element CVS is suitable for connecting two elbow separable connectors type CWS 250A and/or straight separable connectors CGS up to 24 kV. Its dimensions correspond to outer cone systems type A, in accordance with EN 50180 and EN 50181.

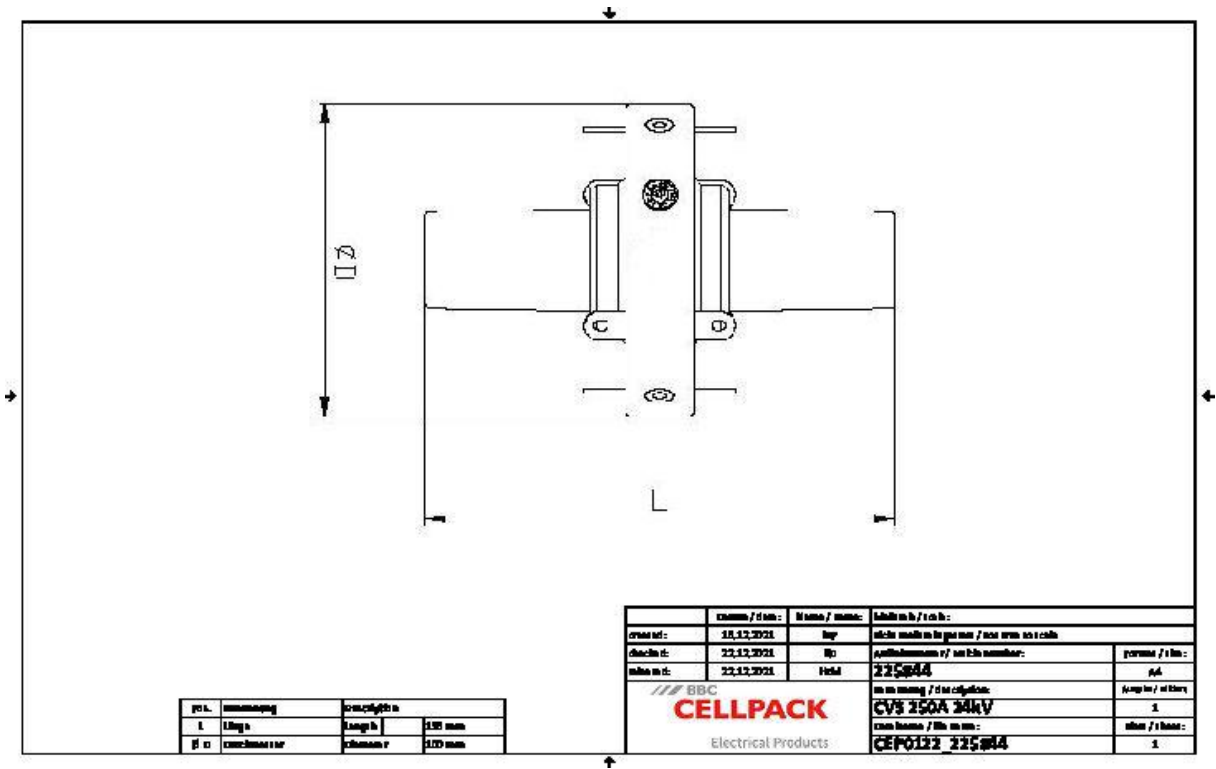


Product description

Article name	CVS 250A 24kV
Article number	225844

Characteristics	Applications
Safe and easy to handle	Indoor
Quick, safe and easy assembly	
Individually tested	

Technical data



Article name	CVS 250A 24kV
Article number	225844
Voltage levels	U0/U (Um) 6/10 (12) kV - 12,7/22 (24) kV
Length L	136 mm
Diameter D	100 mm

Logistics data

Article name	CVS 250A 24kV
Article number	225844
Delivery scope	Set of 3 connecting elements
	Assembly material
	Assembly instructions
Shelf life description	Unlimited shelf life
Country of origin	Germany
Customs tariff number	85479000
EAN/GTIN	4010311126708

Packaging data

Alternative unit of measure	Carton	Pal. OW
Base quantity	1	12
Base unit of measure	Piece	Piece
Lenght (mm)	435	1200
Width (mm)	261	800
Height (mm)	160	1130
Net weight (kg)	2.442	29.304
Gross weight (kg)	2.442	29.304