

T-shaped separable connector
for polymeric cables for outer cone system terminals type C

Cellplux screwable T-shaped separable connectors CTS are suitable for connecting all polymeric-insulated 1-core cables (PVC, PE, XLPE, EPR), with different types of semi-conductive layers (graphite-coated or strippable) and screen design (wire or tape screen) to switching equipment and transformers having an outer cone system type C, up to maximum network voltage of 36 kV in accordance with EN 50180 and EN 50181.



Product description

Article name	CTS 630A 24kV 240-400
Article number	355561
Notes	Other T-shaped separable connectors (e.g. for armoured or graphite-coated cables, class 5 etc.) available on request.
Optional accessory	EGA earthing kit for cables with tape screen (see Connecting technology)

Characteristics
With capacitive measuring point for voltage checking
Suitable for various cone voltage sensors
Routine tests (AC test, PD measurement, X-ray control)

Outer semi-conductive layer made of semi-conductive EPDM provides protection from exposed electrical parts

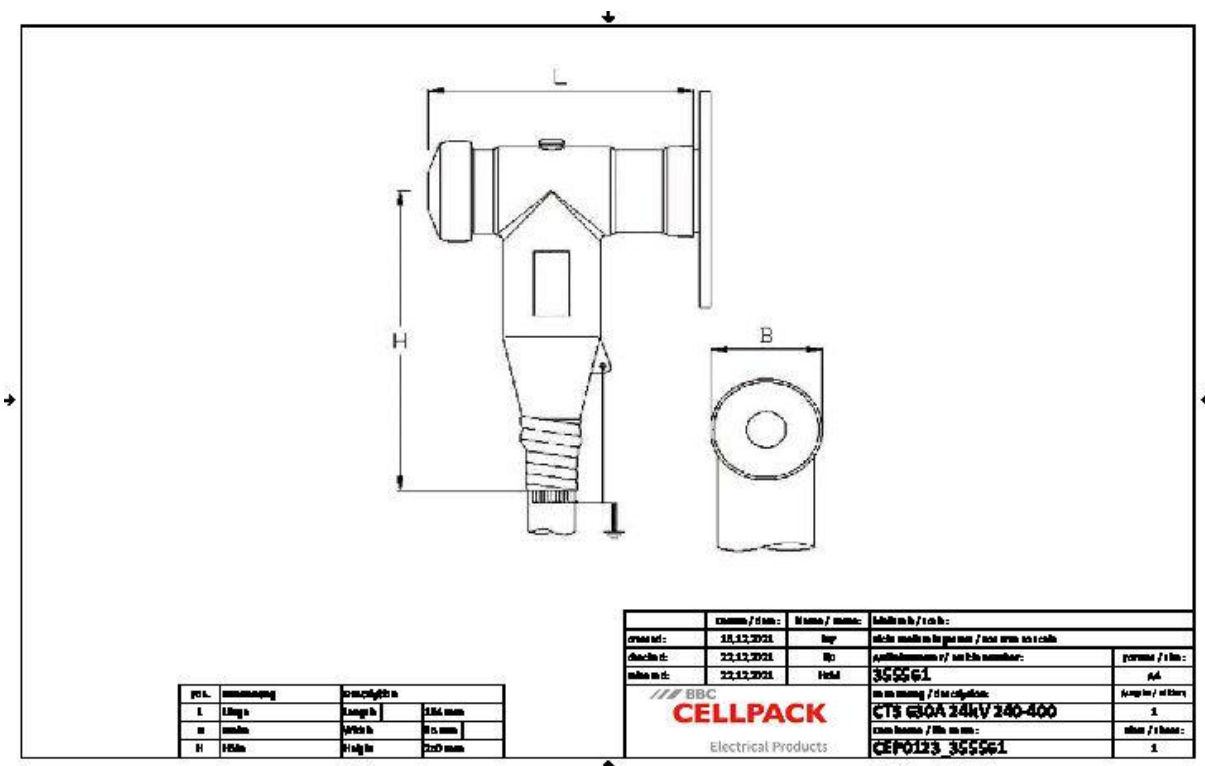
Cable sheath insulation fault test may be performed while under voltage

For both copper and aluminium conductors
Quick, safe and easy assembly

Suitable for a wide range of applications due to integrated screw cable lug

Applications
Indoor
Outdoor

Technical data



Article name	CTS 630A 24kV 240-400
Article number	355561
Voltage levels	U0/U (Um) 6/10 (12) kV - 19/33 (36) kV U0/U (Um) 6/10 (12) kV - 12,7/22 (24) kV
Test standards	CENELEC HD 629.1
Length L	194 mm
Width B	85 mm
Height H	250 mm
Diameter over core insulation after removal of the outer conductive layer min	23.7 mm
Diameter over core insulation after removal of the outer conductive layer max	37.8 mm
Nominal cross section 12 kV min	240 mm ²
Nominal cross section 12 kV max	400 mm ²
Nominal cross section 17,5 kV min	240 mm ²
Nominal cross section 17,5 kV max	400 mm ²
Nominal cross section 24 kV min	240 mm ²
Nominal cross section 24 kV max	400 mm ²

Logistics data

Article name	CTS 630A 24kV 240-400
Article number	355561
Delivery scope	Set of 3 separable connectors
	Silicone field control elements
	Earthing set
	Screw cable lugs for main conductor
	Assembly material
	Assembly instructions
Shelf life description	Unlimited shelf life
Storage temperatur max	50 °C
Storage temperatur min	0 °C
Country of origin	Germany
Customs tariff number	85479000
EAN/GTIN	4010311172460

Packaging data

Alternative unit of measure	Carton	Pal. OW
Base quantity	1	32
Base unit of measure	Piece	Piece
Lenght (mm)	371	1200
Width (mm)	295	800
Height (mm)	237	1130
Net weight (kg)	7.92	253.44
Gross weight (kg)	7.92	266.648