

T-shaped separable connector

for polymeric cables for outer cone system terminals type C

Cellplux screwable T-shaped separable connectors CTS are suitable for connecting all polymeric-insulated 1-core cables (PVC, PE, XLPE, EPR), with different types of semi-conductive layers (graphite-coated or strippable) and screen design (wire or tape screen) to switching equipment and transformers having an outer cone system type C, up to maximum network voltage of 36 kV in accordance with EN 50180 and EN 50181.



Product description

| | |
|--------------------|---|
| Article name | CTS 630A 24kV 25-70 |
| Article number | 355434 |
| Notes | Other T-shaped separable connectors (e.g. for armoured or graphite-coated cables, class 5 etc.) available on request. |
| Optional accessory | EGA earthing kit for cables with tape screen (see Connecting technology) |

Characteristics

With capacitive measuring point for voltage checking
Suitable for various cone voltage sensors
Routine tests (AC test, PD measurement, X-ray control)
Outer semi-conductive layer made of semi-conductive EPDM provides protection from exposed electrical parts

Cable sheath insulation fault test may be performed while under voltage

For both copper and aluminium conductors

Quick, safe and easy assembly

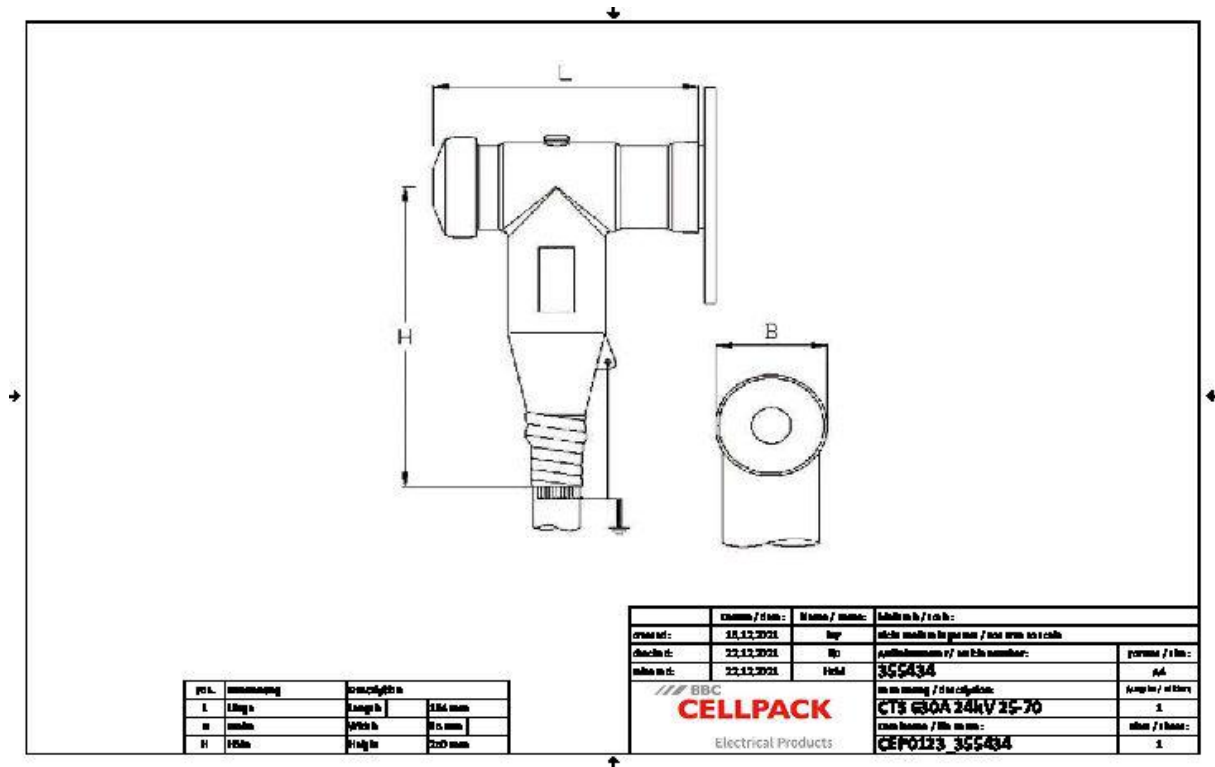
Suitable for a wide range of applications due to integrated screw cable lug

Applications

Indoor

Outdoor

Technical data



| | |
|---|--|
| Article name | CTS 630A 24kV 25-70 |
| Article number | 355434 |
| Voltage levels | U0/U (Um) 6/10 (12) kV - 19/33 (36) kV U0/U (Um) 6/10 (12) kV - 12,7/22 (24) kV |
| Test standards | CENELEC HD 629.1 |
| Length L | 194 mm |
| Width B | 85 mm |
| Height H | 250 mm |
| Diameter over core insulation after removal of the outer conductive layer min | 14.7 mm |
| Diameter over core insulation after removal of the outer conductive layer max | 14.7 mm |
| Nominal cross section 12 kV min | 50 mm ² |
| Nominal cross section 12 kV max | 95 mm ² |
| Nominal cross section 17,5 kV min | 25 mm ² |
| Nominal cross section 17,5 kV max | 95 mm ² |
| Nominal cross section 24 kV min | 25 mm ² |
| Nominal cross section 24 kV max | 70 mm ² |

Logistics data

| | |
|------------------------|-------------------------------------|
| Article name | CTS 630A 24kV 25-70 |
| Article number | 355434 |
| Delivery scope | Set of 3 separable connectors |
| | Silicone field control elements |
| | Earthing set |
| | Screw cable lugs for main conductor |
| | Assembly material |
| | Assembly instructions |
| Shelf life description | Unlimited shelf life |
| Storage temperatur max | 50 °C |
| Storage temperatur min | 0 °C |
| Country of origin | Germany |
| Customs tariff number | 85479000 |
| EAN/GTIN | 4010311171890 |

Packaging data

| | | |
|-----------------------------|--------|---------|
| Alternative unit of measure | Carton | Pal. OW |
| Base quantity | 1 | 32 |
| Base unit of measure | Piece | Piece |
| Lenght (mm) | 372 | 1200 |
| Width (mm) | 287 | 800 |
| Height (mm) | 235 | 1130 |
| Net weight (kg) | 6.148 | 196.736 |
| Gross weight (kg) | 6.148 | 214.936 |