

T-shaped separable connector

for polymeric cables for outer cone system terminals type C

Cellplux screwable T-shaped separable connectors CTS are suitable for connecting all polymeric-insulated 1-core cables (PVC, PE, XLPE, EPR), with different types of semi-conductive layers (graphite-coated or strippable) and screen design (wire or tape screen) to switching equipment and transformers having an outer cone system type C, up to maximum network voltage of 36 kV in accordance with EN 50180 and EN 50181.



Product description

Article name	CTS 1250A 36kV 400-630 EGA M12 KS
Article number	309284
Notes	Separable connectors for alternative cross-sections and for class 5 conductors on request
Optional accessory	EGA earthing kit for cables with tape screen (see Connecting technology)

Characteristics
With capacitive measuring point for voltage checking
Individually tested

Outer semi-conductive layer made of semi-conductive EPDM provides protection from exposed electrical parts

Cable sheath insulation fault test may be performed while under voltage

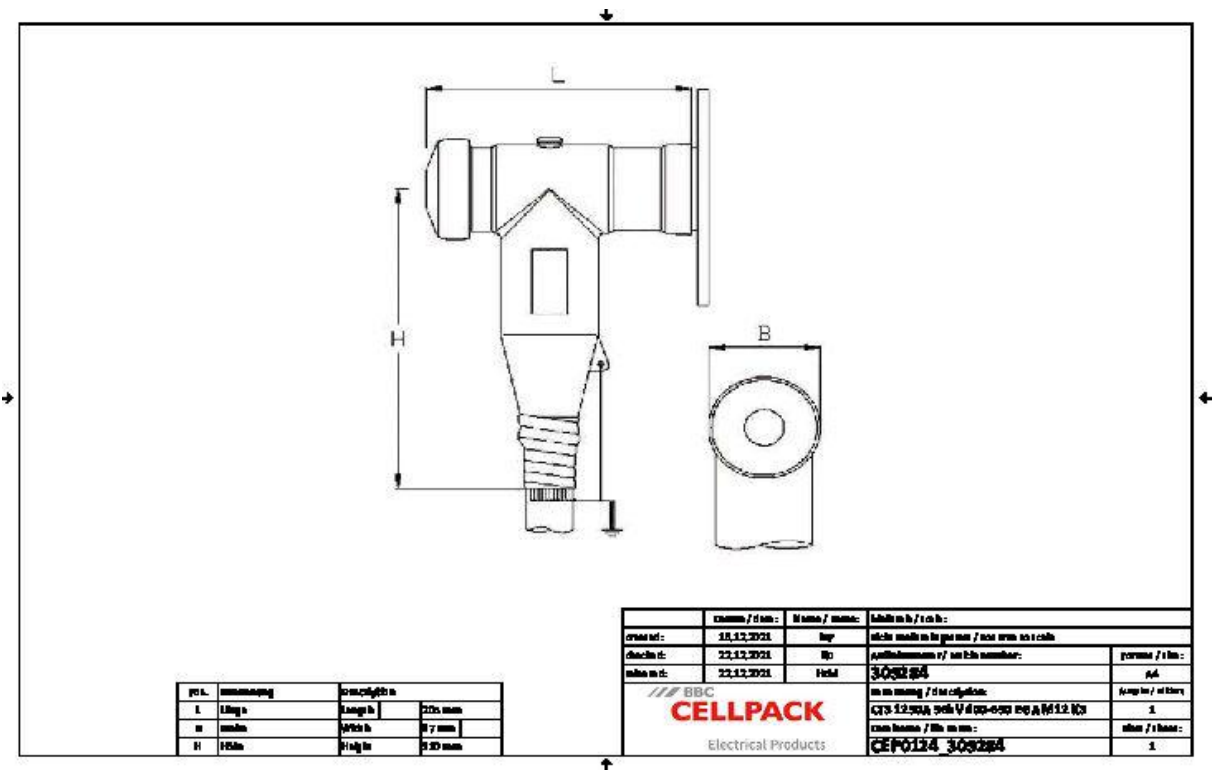
For both copper and aluminium conductors

Quick, safe and easy assembly

Suitable for a wide range of applications due to integrated screw cable lug

Applications
Indoor
Outdoor

Technical data



Article name	CTS 1250A 36kV 400-630 EGA M12 KS
Article number	309284
Voltage levels	U0/U (Um) 12/20 (24) kV - 19/33 (36) kV
Test standards	CENELEC HD 629.1
Length L	205 mm
Width B	87 mm
Height H	310 mm
Diameter over core insulation after removal of the outer conductive layer min	39.1 mm
Diameter over core insulation after removal of the outer conductive layer max	49.2 mm
Nominal cross section 24 kV min	630 mm²
Nominal cross section 24 kV max	630 mm²
Nominal cross section 36 kV min	400 mm²
Nominal cross section 36 kV max	630 mm²

## Logistics data

Article name	CTS 1250A 36kV 400-630 EGA M12 KS
Article number	309284
Delivery scope	Set of 3 separable connectors
	Silicone field control elements
	Earthing set
	Assembly material
	Screw cable lugs for main conductor
	Screw cable lug for wire screen
	Assembly instructions
Shelf life description	Unlimited shelf life
Country of origin	Germany
Customs tariff number	85479000
EAN/GTIN	4010311158242

## Packaging data

Alternative unit of measure	Carton	Pal. OW
Base quantity	1	32
Base unit of measure	Piece	Piece
Length (mm)	369	1200
Width (mm)	279	800
Height (mm)	217	1130
Net weight (kg)	9.882	316.224
Gross weight (kg)	9.882	334.424