

T-shaped separable coupling connector  
for polymeric cables for separable connector type CTS

Cellplux T-shaped separable coupling connectors CTKS are suitable for connecting all polymeric-insulated 1-core cables VPE, (H)EPR), with different types of semi-conductive layers (graphite-coated or strippable) and screen design (wire or tape screen) to the back of T-shaped separable connectors type CTS.



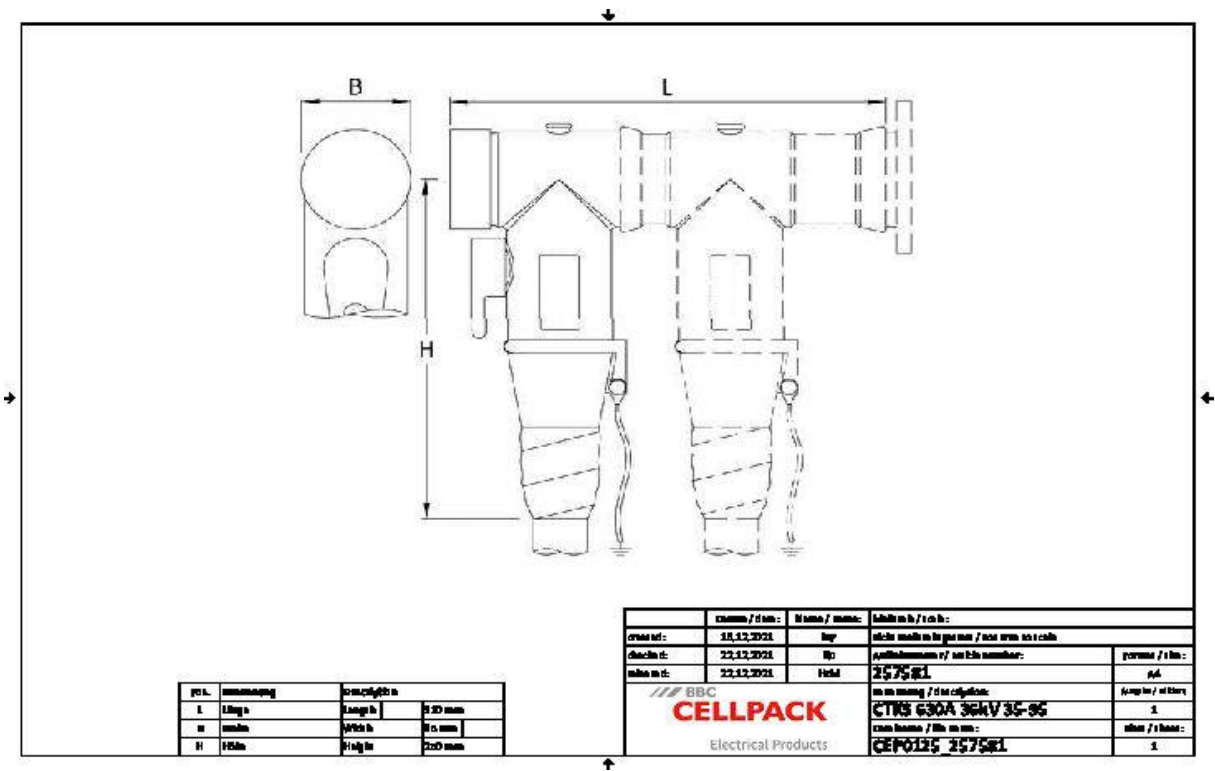
Product description

Article name	CTKS 630A 36kV 35-95
Article number	257581
Notes	Separable connectors for alternative cross-sections and for class 5 conductors on request
Optional accessory	EGA earthing kit for cables with tape screen (see Connecting technology)

Characteristics
With capacitive measuring point for voltage checking
Suitable for various cone voltage sensors
Routine tests (AC test, PD measurement, X-ray control)
Outer semi-conductive layer made of semi-conductive EPDM provides protection from exposed electrical parts
Cable sheath insulation fault test may be performed while under voltage
For both copper and aluminium conductors
Quick, safe and easy assembly
Suitable for a wide range of applications due to integrated screw cable lug

Applications
Indoor
Outdoor

Technical data



Article name	CTKS 630A 36kV 35-95
Article number	257581
Voltage levels	U0/U (Um) 6/10 (12) kV - 19/33 (36) kV U0/U (Um) 12/20 (24) kV - 19/33 (36) kV
Test standards	CENELEC HD 629.1
Length L	310 mm
Width B	85 mm
Height H	250 mm
Diameter over core insulation after removal of the outer conductive layer min	22 mm
Diameter over core insulation after removal of the outer conductive layer max	33.5 mm
Nominal cross section 24 kV min	95 mm²
Nominal cross section 24 kV max	95 mm²
Nominal cross section 36 kV min	35 mm²
Nominal cross section 36 kV max	95 mm²

## Logistics data

Article name	CTKS 630A 36kV 35-95
Article number	257581
Delivery scope	Set of 3 separable coupling connectors
	Silicone field control elements
	Earthing set
	Screw cable lugs for main conductor
	Assembly material
	Assembly instructions
Shelf life description	Unlimited shelf life
Storage temperatur max	50 °C
Storage temperatur min	0 °C
Country of origin	Germany
Customs tariff number	85479000
EAN/GTIN	4010311139203

## Packaging data

Alternative unit of measure	Carton	Pal. OW
Base quantity	1	32
Base unit of measure	Piece	Piece
Lenght (mm)	374	1200
Width (mm)	288	800
Height (mm)	237	1130
Net weight (kg)	5.37	171.84
Gross weight (kg)	5.37	190.04