

T-shaped separable coupling connector
for polymeric cables for separable connector type CTS

Cellplux T-shaped separable coupling connectors CTKS are suitable for connecting all polymeric-insulated 1-core cables VPE, (H)EPR), with different types of semi-conductive layers (graphite-coated or strippable) and screen design (wire or tape screen) to the back of T-shaped separable connectors type CTS.



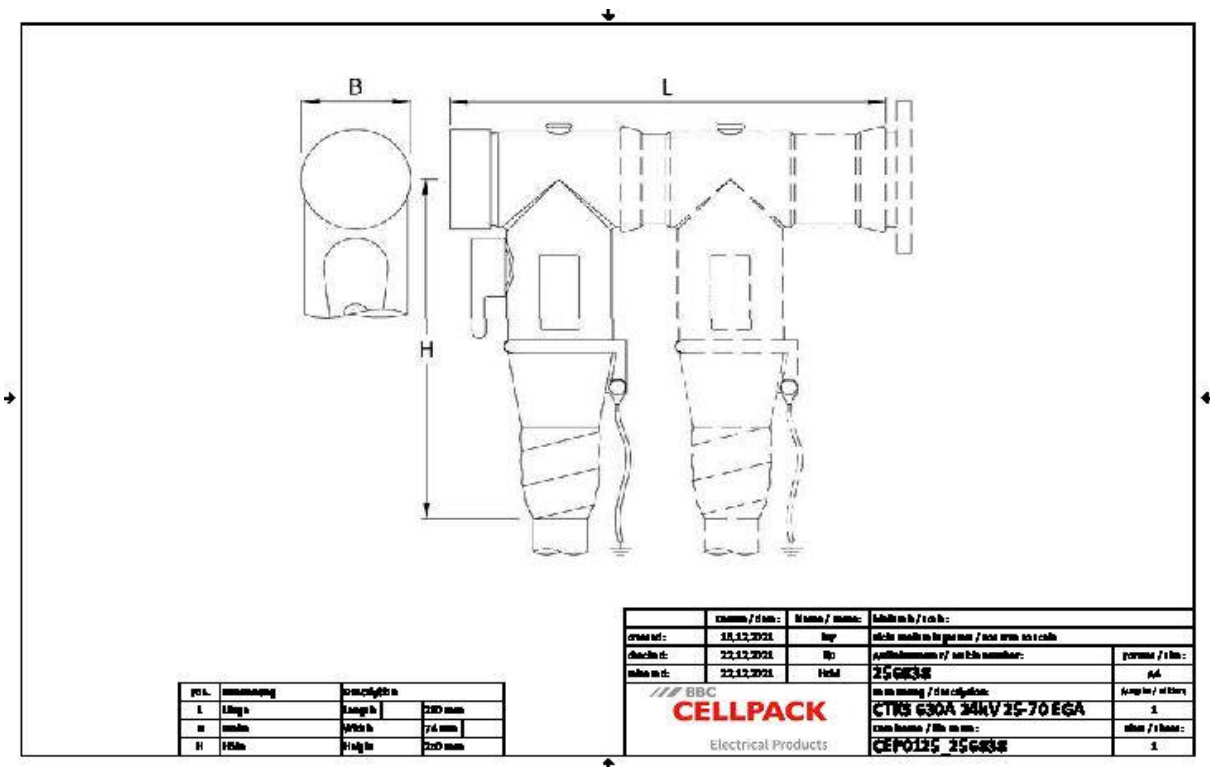
Product description

Article name	CTKS 630A 24kV 25-70 EGA
Article number	256838
Notes	Separable connectors for alternative cross-sections and for class 5 conductors on request
Optional accessory	EGA earthing kit for cables with tape screen (see Connecting technology)

Characteristics
With capacitive measuring point for voltage checking
Suitable for various cone voltage sensors
Routine tests (AC test, PD measurement, X-ray control)
Outer semi-conductive layer made of semi-conductive EPDM provides protection from exposed electrical parts
Cable sheath insulation fault test may be performed while under voltage
For both copper and aluminium conductors
Quick, safe and easy assembly
Suitable for a wide range of applications due to integrated screw cable lug

Applications
Indoor
Outdoor

Technical data



Article name	CTKS 630A 24kV 25-70 EGA
Article number	256838
Voltage levels	U0/U (Um) 6/10 (12) kV - 19/33 (36) kV U0/U (Um) 6/10 (12) kV - 12,7/22 (24) kV
Test standards	CENELEC HD 629.1
Length L	290 mm
Width B	74 mm
Height H	250 mm
Diameter over core insulation after removal of the outer conductive layer min	14.7 mm
Diameter over core insulation after removal of the outer conductive layer max	23.4 mm
Nominal cross section 12 kV min	50 mm ²
Nominal cross section 12 kV max	95 mm ²
Nominal cross section 17,5 kV min	25 mm ²
Nominal cross section 17,5 kV max	95 mm ²
Nominal cross section 24 kV min	25 mm ²
Nominal cross section 24 kV max	70 mm ²

Logistics data

Article name	CTKS 630A 24kV 25-70 EGA
Article number	256838
Delivery scope	Set of 3 separable coupling connectors
	Silicone field control elements
	Earthing set
	Screw cable lugs for main conductor
	Assembly material
	Assembly instructions
Shelf life description	Unlimited shelf life
Storage temperatur max	50 °C
Storage temperatur min	0 °C
Country of origin	Germany
Customs tariff number	85479000
EAN/GTIN	4010311138909

Packaging data

Alternative unit of measure	Carton	Pal. OW
Base quantity	1	32
Base unit of measure	Piece	Piece
Lenght (mm)	379	1200
Width (mm)	289	800
Height (mm)	235	1130
Net weight (kg)	7.384	236.288
Gross weight (kg)	7.384	254.488