

Screw connector for Cu and Al
longitudinally sealed with separator for low voltage

Screw connector for RM/SM/RE/SE aluminium and copper conductors, suitable for straight-through and transition joints.



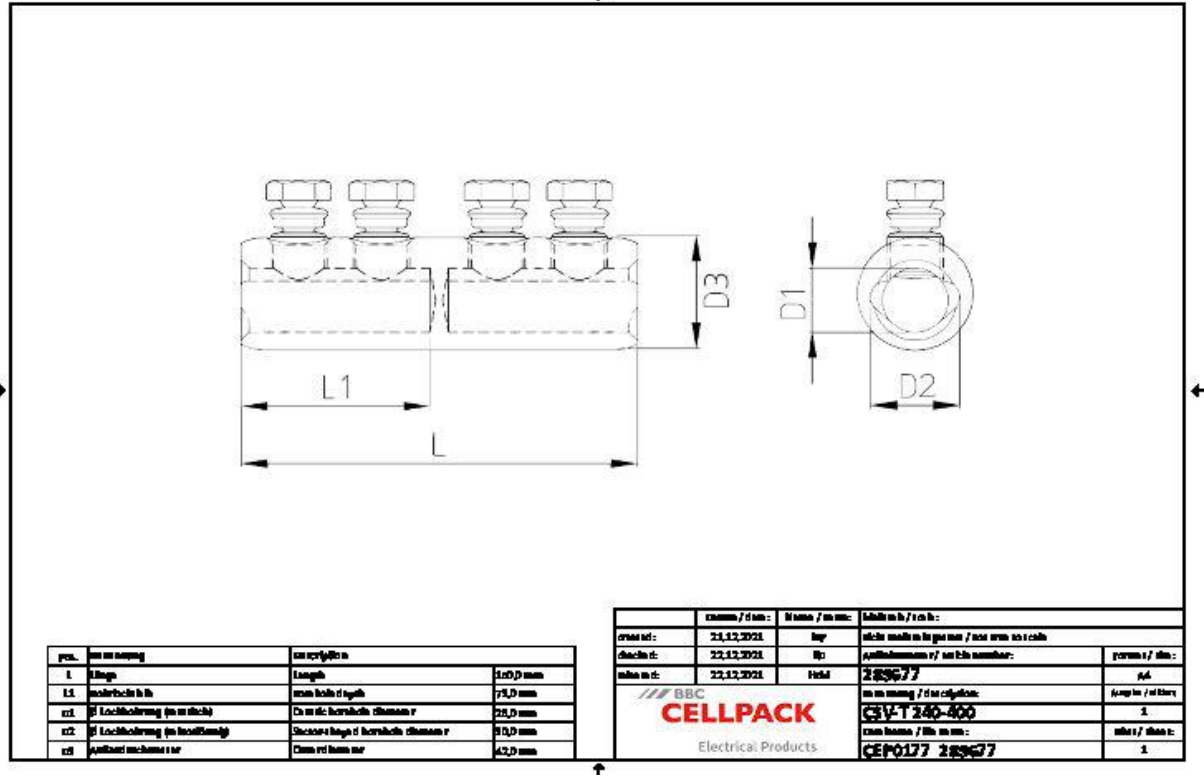
Product description

Article name	CSV-T 240-400
Article number	289677
Notes	BBC Cellpack counter-holder recommended for installation (see Accessories).

Applications

For connecting conductors RM/SM (class 2), RE/SE (class 1) according to DIN EN/IEC 60228 (VDE 0295)

Technical data



Article name	CSV-T 240-400
Article number	289677
Test standards	IEC 61238-1
Materials	Aluminium tin-plated
Length L	150 mm
Length L1	73 mm
Diameter D1	26 mm
Diameter D2	30 mm
Diameter D3	42 mm
Number of bolts	4 Pieces

Logistics data

Article name	CSV-T 240-400
Article number	289677
Delivery scope	Screw connector
	Assembly instructions
Country of origin	Czech Republic
Customs tariff number	85369010
EAN/GTIN	4010311149004

Packaging data

Alternative unit of measure	Bag1	Carton
Base quantity	1	25
Base unit of measure	Piece	Piece
Lenght (mm)	163	425
Width (mm)	80	260
Height (mm)	45	150
Net weight (kg)	0.388	9.7
Gross weight (kg)	0.388	10