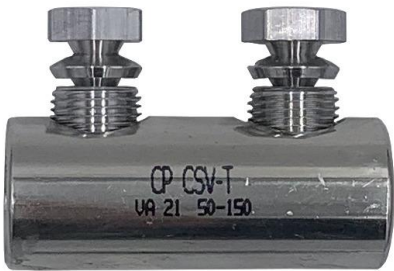


Screw connector for Cu and Al
longitudinally sealed with separator for low voltage

Screw connector for RM/SM/RE/SE aluminium and copper conductors, suitable for straight-through and transition joints.

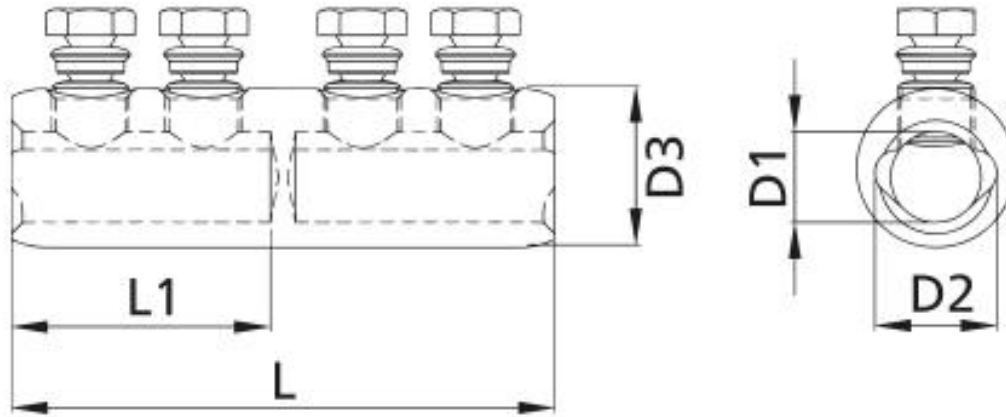


Product description

Article name	CSV-T 50-150
Article number	267708
Notes	BBC Cellpack counter-holder recommended for installation (see Accessories).

Applications
For connecting conductors RM/SM (class 2), RE/SE (class 1) according to DIN EN/IEC 60228 (VDE 0295)

Technical data



Article name	CSV-T 50-150
Article number	267708
Test standards	IEC 61238-1
Materials	Aluminium tin-plated
Nominal cross section RM min	50 mm ²
Nominal cross section RM max	150 mm ²
Nominal cross section SM min	50 mm ²
Nominal cross section SM max	150 mm ²
Nominal cross section SE min	50 mm ²
Nominal cross section SE max	150 mm ²
Nominal cross section RE min	50 mm ²
Nominal cross section RE max	150 mm ²
Length L	70 mm
Length L1	33 mm
Diameter D1	16 mm
Diameter D2	21 mm
Diameter D3	28 mm
Number of bolts	2 Pieces

Logistics data

Article name	CSV-T 50-150
Article number	267708
Delivery scope	Screw connector
	Assembly instructions
Country of origin	Czech Republic
Customs tariff number	85369010
EAN/GTIN	4010311147130

Packaging data

Packaging type	Bag1	Carton
Content quantity	1	80
Unit of measure	Piece	Piece
Length (mm)	101	425
Width (mm)	78	260
Height (mm)	27	150
Net weight (kg)	0.094	7.52
Gross weight (kg)	0.094	7.82