

Screw connector for Cu and Al  
longitudinally sealed with separator for low voltage

Screw connector for RM/SM/RE/SE aluminium and copper conductors, suitable for straight-through and transition joints.



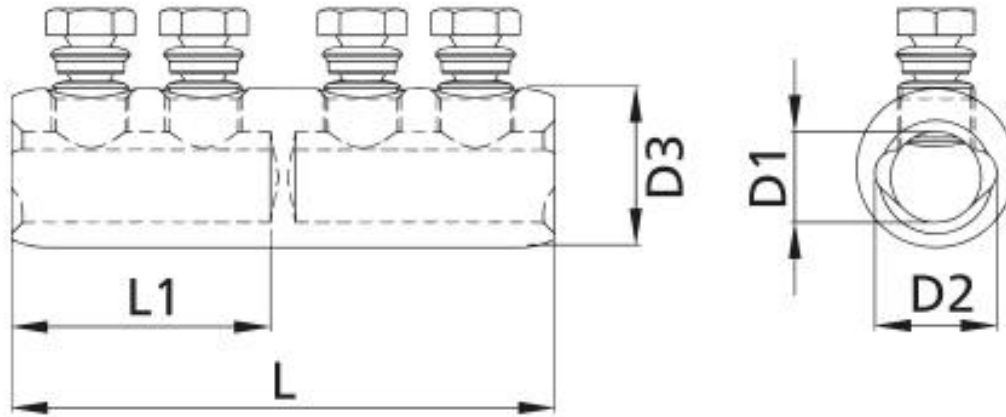
Product description

|                |   |
|----------------|---|
| Article name   | CSV-T 95-240  |
| Article number | 266811  |
| Notes          | BBC Cellpack counter-holder recommended for installation (see Accessories). |

Applications

For connecting conductors RM/SM (class 2), RE/SE (class 1) according to DIN EN/IEC 60228 (VDE 0295)

## Technical data



|                              |                      |
|------------------------------|----------------------|
| Article name                 | CSV-T 95-240         |
| Article number               | 266811               |
| Test standards               | IEC 61238-1          |
| Materials                    | Aluminium tin-plated |
| Nominal cross section RM min | 95 mm <sup>2</sup>   |
| Nominal cross section RM max | 240 mm <sup>2</sup>  |
| Nominal cross section SM min | 95 mm <sup>2</sup>   |
| Nominal cross section SM max | 240 mm <sup>2</sup>  |
| Nominal cross section SE min | 95 mm <sup>2</sup>   |
| Nominal cross section SE max | 240 mm <sup>2</sup>  |
| Nominal cross section RE min | 95 mm <sup>2</sup>   |
| Nominal cross section RE max | 240 mm <sup>2</sup>  |
| Length L                     | 120 mm               |
| Length L1                    | 58 mm                |
| Diameter D1                  | 20 mm                |
| Diameter D2                  | 27 mm                |
| Diameter D3                  | 35 mm                |
| Number of bolts              | 4 Pieces             |

Logistics data

|                       |                       |
|-----------------------|-----------------------|
| Article name          | CSV-T 95-240          |
| Article number        | 266811                |
| Delivery scope        | Screw connector       |
|                       | Assembly instructions |
| Country of origin     | Czech Republic        |
| Customs tariff number | 85369010              |
| EAN/GTIN              | 4010311146324         |

Packaging data

|                   |       |        |
|-------------------|-------|--------|
| Packaging type    | Bag1  | Carton |
| Content quantity  | 1     | 40     |
| Unit of measure   | Piece | Piece  |
| Lenght (mm)       | 130   | 425    |
| Width (mm)        | 100   | 260    |
| Height (mm)       | 35    | 150    |
| Net weight (kg)   | 0.234 | 9.36   |
| Gross weight (kg) | 0.234 | 9.66   |