

Screw connector for Cu and Al

longitudinally sealed with separator for low voltage

Screw connector for RM/SM/RE/SE aluminium and copper conductors, suitable for straight-through and transition joints.



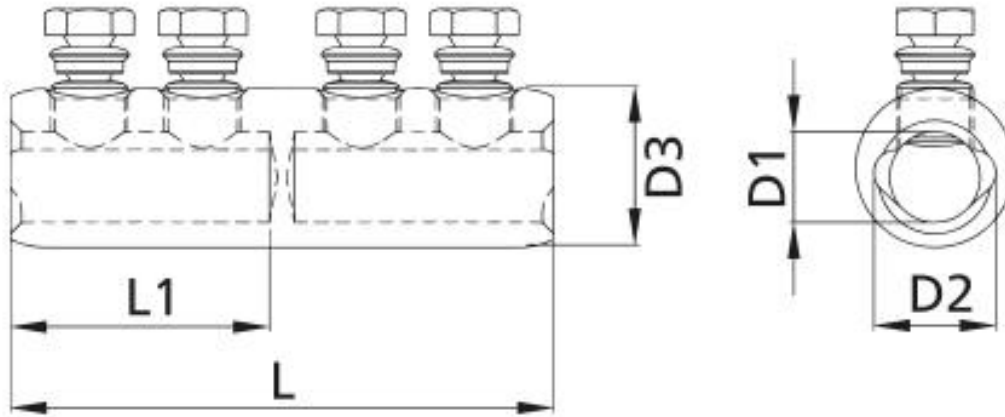
Product description

Article name	CSV-T 16-95
Article number	255408
Notes	BBC Cellpack counter-holder recommended for installation (see Accessories).

Applications

For connecting conductors RM/SM (class 2), RE/SE (class 1) according to DIN EN/IEC 60228 (VDE 0295)

Technical data



Article name	CSV-T 16-95
Article number	255408
Test standards	IEC 61238-1
Materials	Aluminium tin-plated
Nominal cross section RM min	16 mm ²
Nominal cross section RM max	95 mm ²
Nominal cross section SM min	16 mm ²
Nominal cross section SM max	95 mm ²
Nominal cross section SE min	16 mm ²
Nominal cross section SE max	95 mm ²
Nominal cross section RE min	16 mm ²
Nominal cross section RE max	95 mm ²
Length L	60 mm
Length L1	28 mm
Diameter D1	12.5 mm
Diameter D2	16 mm
Diameter D3	24 mm
Number of bolts	2 Pieces

Logistics data

Article name	CSV-T 16-95
Article number	255408
Delivery scope	Screw connector
	Installation instruction
Country of origin	Spain
Customs tariff number	85369010
EAN/GTIN	4010311137629

Packaging data

Packaging type	Bag1	Carton	Pal. OW
Content quantity	1	50	1800
Unit of measure	Piece	Piece	Piece
Length (mm)	103	420	1200
Width (mm)	76	250	800
Height (mm)	25	140	1130
Net weight (kg)	0.066	3.3	118.8
Gross weight (kg)	0.066	3.6	137