

Screw cable lug for Cu and Al
longitudinally sealed for low and medium voltage

Screw cable lug for RM/SM/RE/SE aluminium and copper conductors, suitable for indoor and outdoor terminations.



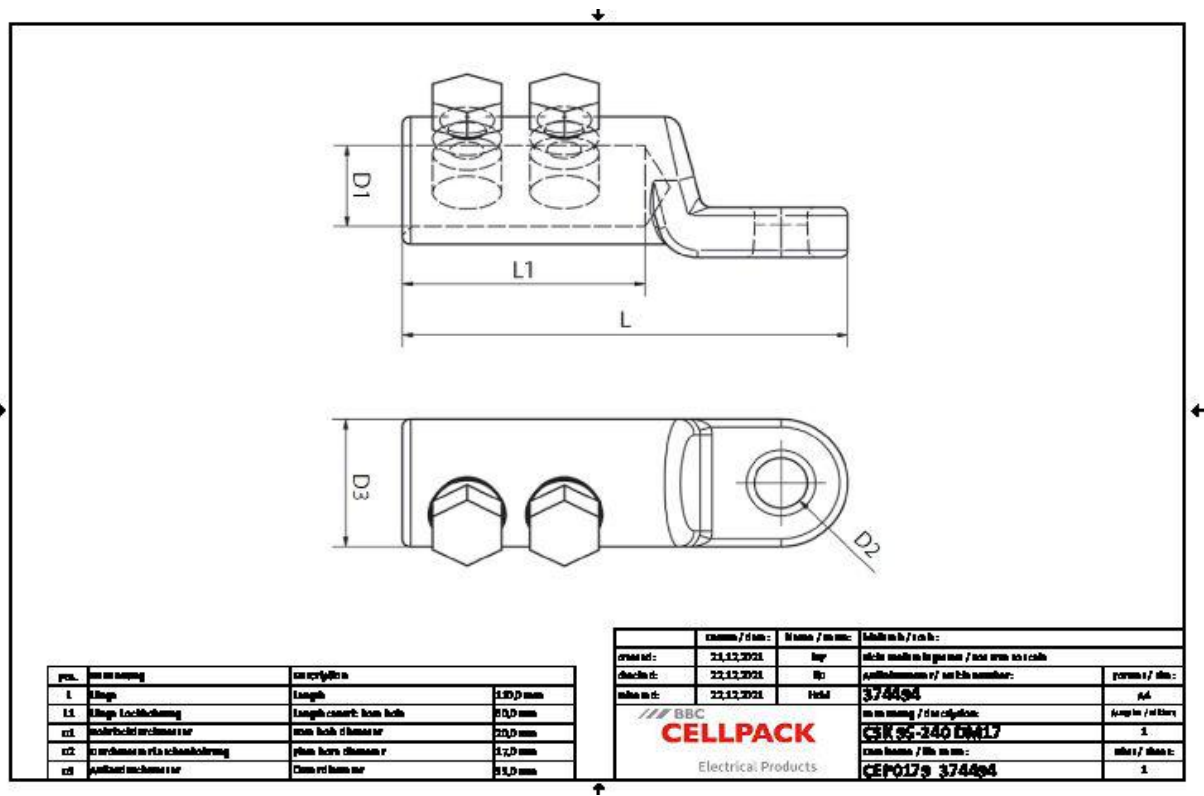
Product description

Article name	CSK 95-240 DM17
Article number	374494
Notes	BBC Cellpack counter-holder recommended for installation (see Accessories). Application according to AWG, ISWG and BWG standards on request.

Applications

For connecting conductors RM/SM (class 2), RE/SE (class 1) according to DIN EN/IEC 60228 (VDE 0295)

Technical data



Article name	CSK 95-240 DM17
Article number	374494
Test standards	IEC 61238-1
Materials	Aluminium tin-plated
Length L	110 mm
Length L1	60 mm
Diameter D1	20 mm
Diameter D2	17 mm
Diameter D3	33 mm
Number of bolts	2 Pieces

Logistics data

Article name	CSK 95-240 DM17
Article number	374494
Delivery scope	Screw cable lug
	Assembly instructions
Country of origin	Czech Republic
Customs tariff number	85369010
EAN/GTIN	4010311185385

Packaging data

Alternative unit of measure	Bag1	Carton
Base quantity	1	10
Base unit of measure	Piece	Piece
Lenght (mm)	117	300
Width (mm)	75	150
Height (mm)	37	95
Net weight (kg)	0.167	1.67
Gross weight (kg)	0.167	1.97