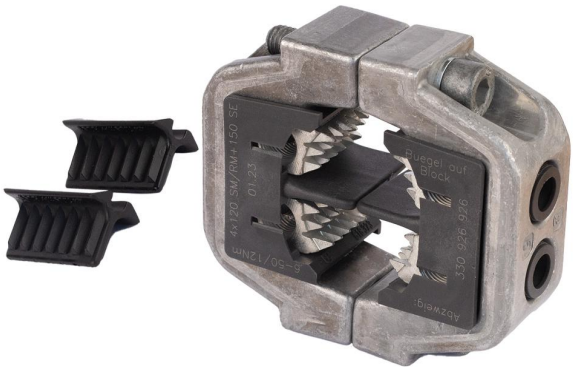


# Compact ring clamp

## Branch clamp

for low voltage

Branch clamp for aluminium sector shaped conductors. Suitable for 3- or 4-core cables with PVC, XLPE (VPE) EPR insulation.



### Product description

Article name	Branch clamp 4x95-120/50
Article number	126208

#### Characteristics

Contact screws can be accessed from the side or from above

No stripping of wires

Can be installed / operated while under voltage

Safe and easy to handle

#### Applications

RM (class 2), SE (class 1) according to DIN EN/IEC 60228 (VDE 0295)

## Technical data

Article name	Branch clamp 4x95-120/50
Article number	126208
Materials	Blank aluminium
Cross section Cu/RM min	95 mm <sup>2</sup>
Cross section Cu/RM max	120 mm <sup>2</sup>
Cross section Al/SE	150 mm <sup>2</sup>
Cross section Branch cable min	6 mm <sup>2</sup>
Cross section Branch cable max	50 mm <sup>2</sup>
Width across flat 1	6 mm
Width across flat 2	5 mm
Diameter D	93 mm
Number of conductors	4 Pieces

## Logistics data

Article name	Branch clamp 4x95-120/50
Article number	126208
Delivery scope	Branch clamp
Country of origin	Germany
Customs tariff number	85369010
EAN/GTIN	4010311048833

## Packaging data

Packaging type	Bag1	Carton
Content quantity	1	5
Unit of measure	Piece	Piece
Lenght (mm)	138	215
Width (mm)	105	100
Height (mm)	47	95
Net weight (kg)	0.403	2.015
Gross weight (kg)	0.403	2.315