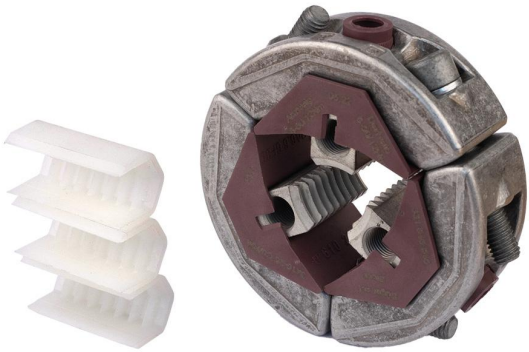


Branch clamp

for low voltage

Branch clamp for aluminium sector shaped conductors. Suitable for 3- or 4-core cables with PVC, XLPE (VPE) EPR insulation.



Product description

Article name	Branch clamp 3x16-25/50
Article number	126194

Characteristics	Applications
Contact screws can be accessed from the side or from above	RM (class 2), SE (class 1) according to DIN EN/IEC 60228 (VDE 0295)
No stripping of wires	
Can be installed / operated while under voltage	
Safe and easy to handle	

Technical data

Article name	Branch clamp 3x16-25/50
Article number	126194
Materials	Blank aluminium
Cross section Cu/RM min	16 mm ²
Cross section Cu/RM max	25 mm ²
Cross section Branch cable min	6 mm ²
Cross section Branch cable max	50 mm ²
Width across flat 1	6 mm
Width across flat 2	5 mm
Diameter D	87 mm
Number of conductors	3 Pieces

Logistics data

Article name	Branch clamp 3x16-25/50
Article number	126194
Delivery scope	Branch clamp
Country of origin	Germany
Customs tariff number	85369010
EAN/GTIN	4010311048727

Packaging data

Packaging type	Bag1	Carton
Content quantity	1	5
Unit of measure	Piece	Piece
Lenght (mm)	138	195
Width (mm)	104	120
Height (mm)	52	120
Net weight (kg)	0.446	2.23
Gross weight (kg)	0.446	2.53