

Coupling element up to 36 kV
for separable connector type CTS

The coupling element CKS is suitable for connecting two T-shaped separable connectors CTS up to 36 kV. It can be used for 630 A and 1250 A applications.



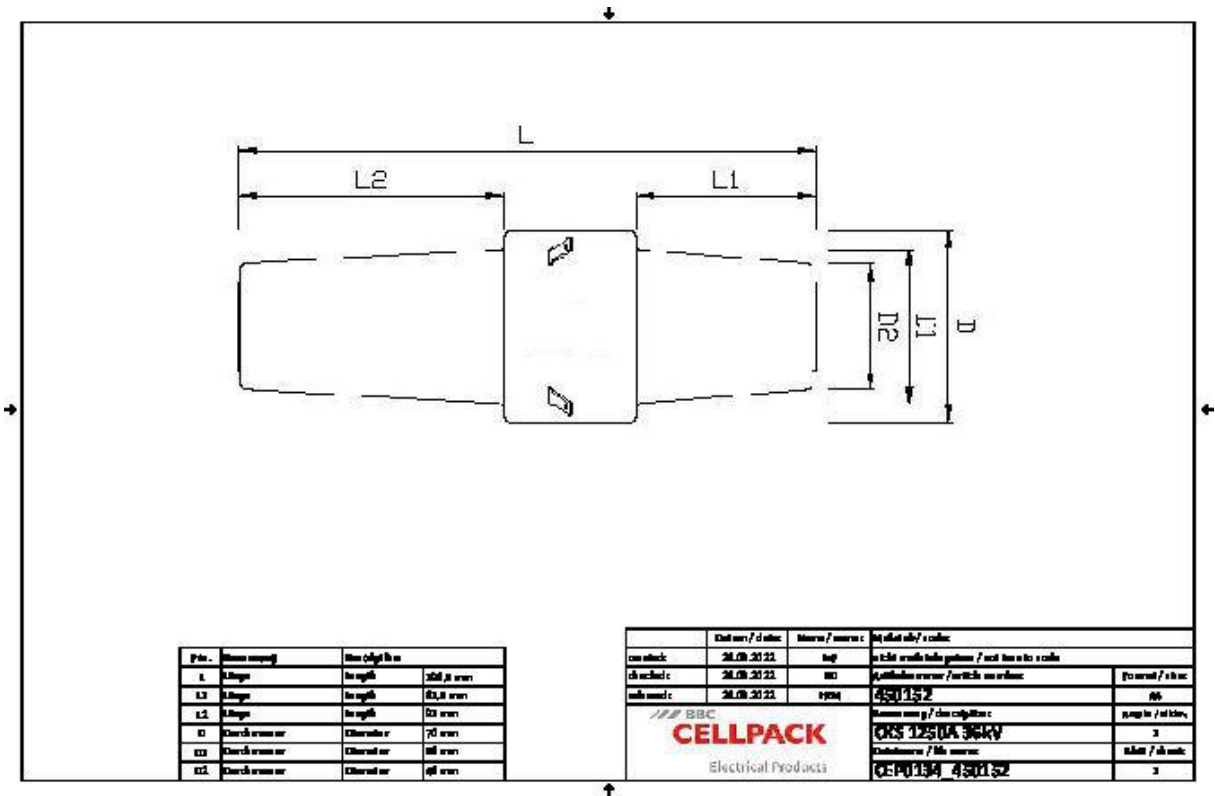
Product description

Article name	CKS 1250A 36kV
Article number	450152

Characteristics
Safe and easy to handle
Quick, safe and easy assembly
Individually tested

Applications
Indoor

Technical data



Article name	CKS 1250A 36kV
Article number	450152
Voltage levels	U0/U (Um) 6/10 (12) kV - 19/33 (36) kV
Test standards	IEC 60137
Length L	196.5 mm
Length L1	61.5 mm
Length L2	91 mm
Diameter D	70 mm
Diameter D1	56 mm
Diameter D2	46 mm

Logistics data

Article name	CKS 1250A 36kV
Article number	450152
Delivery scope	Set of 3 separable coupling connectors
	Assembly material
	Assembly instructions
Shelf life description	Unlimited shelf life
Country of origin	Germany
Customs tariff number	85479000
EAN/GTIN	4010311198880

Packaging data

Alternative unit of measure	Carton	Pal. OW
Base quantity	1	64
Base unit of measure	Piece	Piece
Lenght (mm)	379	1200
Width (mm)	289	800
Height (mm)	118	1130
Net weight (kg)	5.7	364.8
Gross weight (kg)	5.7	383