

1-core repair straight-through joint
with screw connector for 1-core polymeric cables

Hybrid-repair-straight-through joints CHRMVS are suitable for all 1-core polymeric- insulated cables (PVC, PE, XLPE, EPR). They enable the repair of damaged cables without the use of separate cable sections. With screw connector.

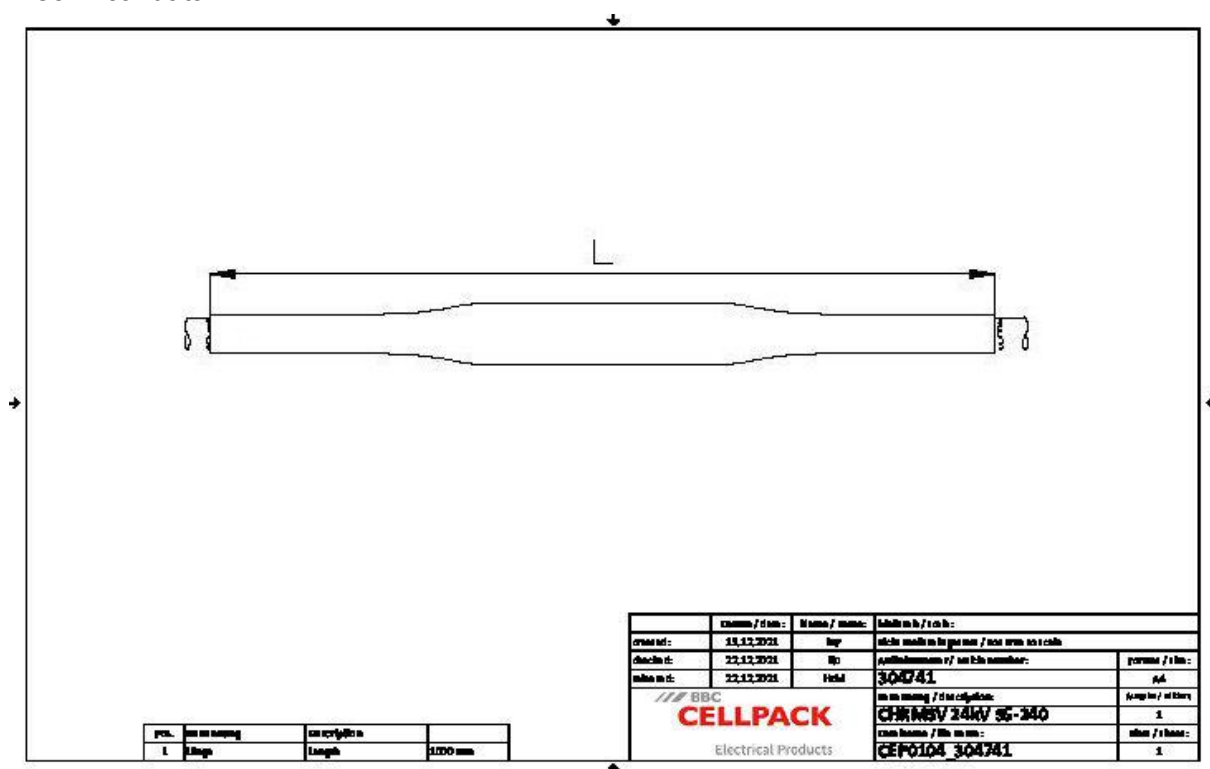


Product description

Article name	CHRMVS 24kV 95-240
Article number	304741
Notes	Can be used also for cables Um = 7,2 kV, then the minimum diameter over conductor insulation has to be checked.

Characteristics
Reliable stress control due to flexible silicone stress control elements
For both copper and aluminium conductors
For all cables with copper wire or tape screen
Wide conductor and cross-section range
Quick, safe and easy assembly
Suitable for a wide range of applications due to integrated screw connector
Ready for immediate operation

Applications
Indoor
Outdoor
Underground
Water
Installation ducts
Ductwork



Article name	CHRMVS 24kV 95-240
Article number	304741
Voltage levels	U0/U (Um) 12/20 (24) kV - 12,7/22 (24) kV
Test standards	CENELEC HD 629.1
Length Connector	440 mm
Length L	1000 mm
Diameter over core insulation after removal of the outer conductive layer min	19.9 mm
Nominal cross section 12 kV min	150 mm ²
Nominal cross section 12 kV max	240 mm ²
Nominal cross section 17,5 kV min	120 mm ²
Nominal cross section 17,5 kV max	240 mm ²
Nominal cross section 24 kV min	95 mm ²
Nominal cross section 24 kV max	240 mm ²

Logistics data

Article name	CHRMSV 24kV 95-240
Article number	304741
Delivery scope	Thick wall heat shrinkable insulation tubes
	Thick wall heat shrinkable outer tube with hot melt adhesive
	Silicone field control elements
	Copper braid tube
	Pressure springs
	Innovative screw connector with conductive cover
	Field control filling tape (blue)
	Assembly material
	Assembly instructions
Shelf life description	Unlimited shelf life
Country of origin	Germany
Customs tariff number	39269097
EAN/GTIN	4010311156507

Packaging data

Alternative unit of measure	Carton	Pal. EU
Base quantity	1	25
Base unit of measure	Piece	Piece
Length (mm)	730	1200
Width (mm)	231	800
Height (mm)	188	1130
Net weight (kg)	3.626	90.65
Gross weight (kg)	3.626	119.65