

1-core straight-through joint

for all 1-core polymeric cables

Hybrid straight-through joints CHM are suitable for all 1-core polymeric-insulated cables (PVC, PE, XLPE, EPR). They allow the connection of cables with different cross sections and conductor materials even with different cable designs concerning the semi-conductive layer (graphite-coated, removable or strippable) and screen design (copper wire or tape screen). Suitable for compression connectors.



Product description

Article name	CHM 17kV 630-1000
Article number	194085
Notes	Can be used also for cables Um = 7,2 kV, then the minimum diameter over conductor insulation has to be checked.
Optional accessory	Compression connectors (see Connecting technology)

Characteristics

Reliable stress control due to flexible silicone stress control elements

For both copper and aluminium conductors

For all cables with copper wire or tape screen

Wide conductor and cross-section range

Quick, safe and easy assembly

Ready for immediate operation

Applications

Indoor

Outdoor

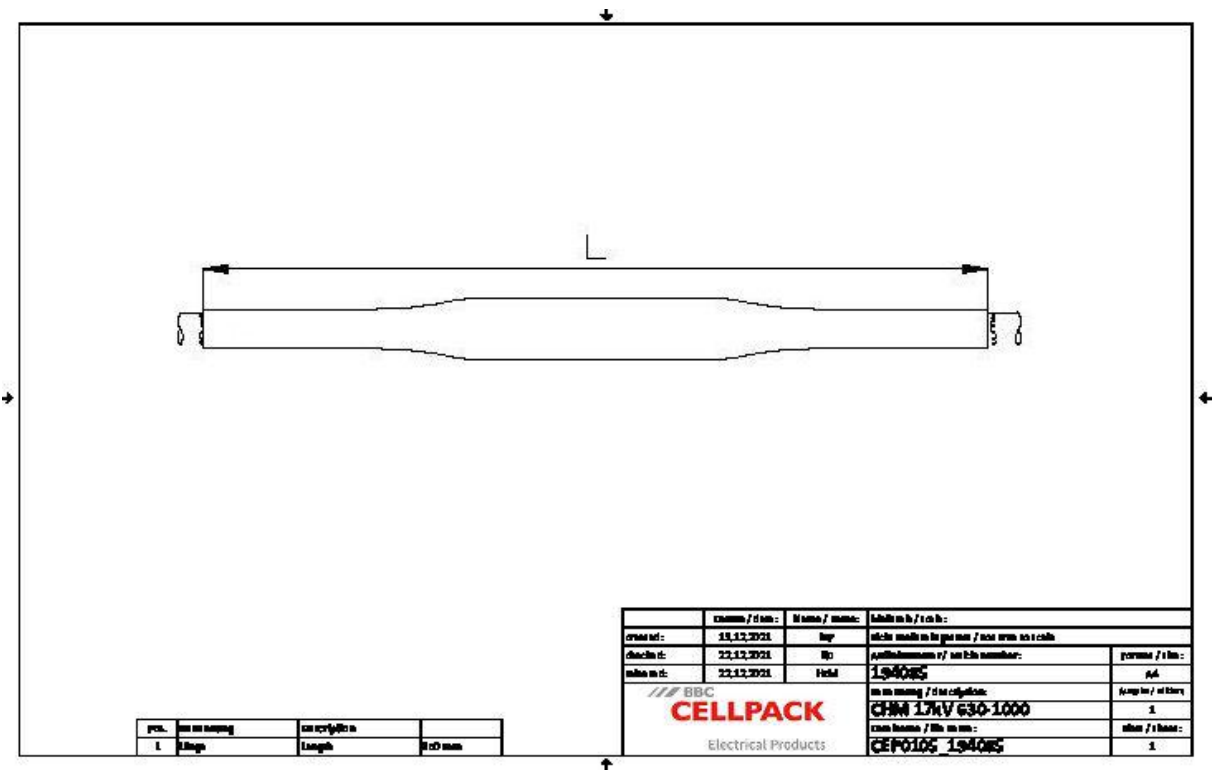
Underground

Water

Installation ducts

Ductwork

Technical data



Article name	CHM 17kV 630-1000
Article number	194085
Voltage levels	U0/U (Um) 8,7/15 (17,5) kV
Test standards	CENELEC HD 629.1
Diameter connector max	60 mm
Length Connector 17,5kV max	360 mm
Length L	850 mm
Diameter over core insulation after removal of the outer conductive layer min	36.8 mm
Nominal cross section 17,5 kV min	630 mm <sup>2</sup>
Nominal cross section 17,5 kV max	1000 mm <sup>2</sup>

## Logistics data

Article name	CHM 17kV 630-1000
Article number	194085
Delivery scope	Thick wall heat shrinkable insulation tubes
	Thick wall heat shrinkable outer tube with hot melt adhesive
	Silicone field control elements
	Copper braid tube
	Pressure springs
	Field control filling tape (blue)
	Assembly material
	Assembly instructions
Shelf life description	Unlimited shelf life
Country of origin	Germany
Customs tariff number	39269097
EAN/GTIN	4010311047232

## Packaging data

Alternative unit of measure	Carton	Pal. OW
Base quantity	1	24
Base unit of measure	Piece	Piece
Length (mm)	875	1200
Width (mm)	379	800
Height (mm)	188	1130
Net weight (kg)	3.386	81.264
Gross weight (kg)	3.386	99.464