

1-core straight-through joint
with screw connector for 1-core polymeric cables

Hybrid straight-through joints CHMSV are suitable for all 1-core polymeric-insulated cables (PVC, PE, XLPE, EPR). They allow the connection of cables with different cross sections and conductor materials even with different cable designs concerning the semi-conductive layer (graphite-coated, removable or strippable) and screen design (copper wire or tape screen). With screw connector.



Product description

Article name	CHMSV 36kV 240-400
Article number	258146
Notes	Can be used also for cables Um = 7,2 kV, then the minimum diameter over conductor insulation has to be checked.
	Straight-through joints with larger cross-section available on request.

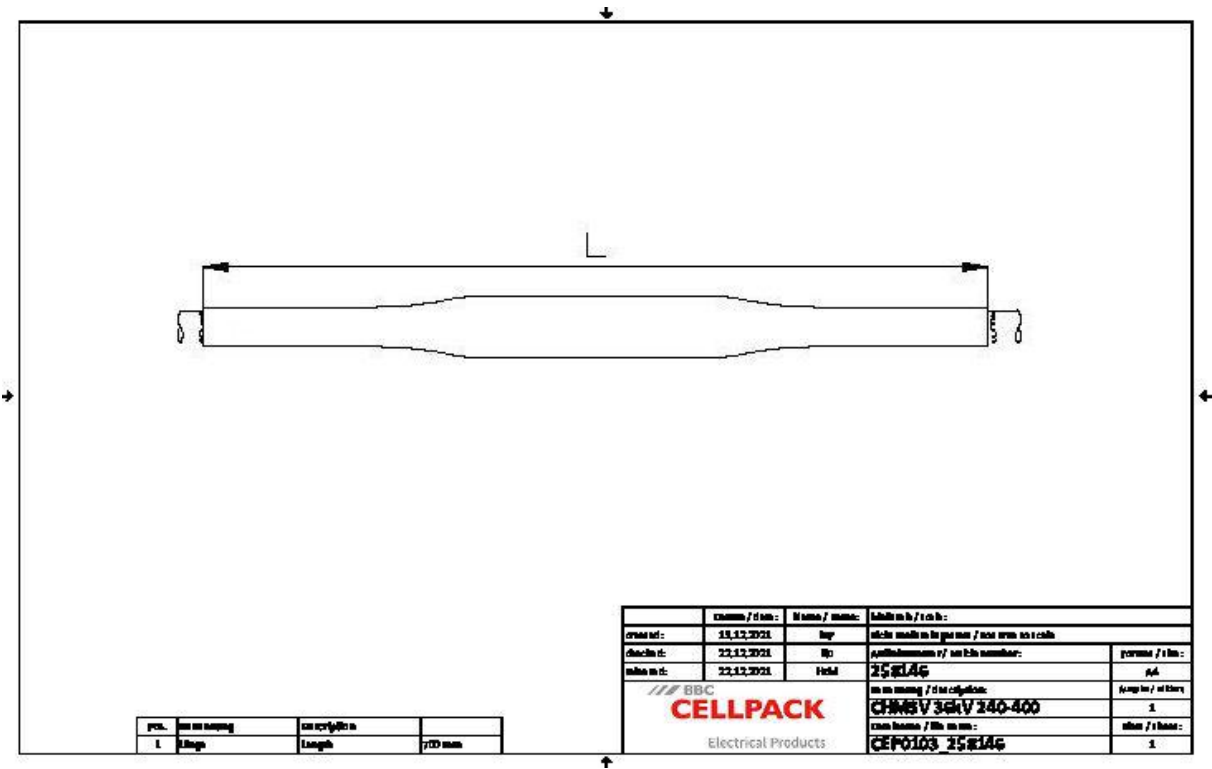
Characteristics

Reliable stress control due to flexible silicone stress control elements
For both copper and aluminium conductors
For all cables with copper wire or tape screen
Wide conductor and cross-section range
Quick, safe and easy assembly
Ready for immediate operation
Suitable for a wide range of applications due to integrated screw connector

Applications

Indoor
Outdoor
Underground
Water
Installation ducts
Ductwork

Technical data



Article name	CHMSV 36kV 240-400
Article number	258146
Voltage levels	U0/U (Um) 18/30 (36) kV - 19/33 (36) kV
Test standards	CENELEC HD 629.1
Length L	700 mm
Diameter over core insulation after removal of the outer conductive layer min	32 mm
Nominal cross section 36 kV min	240 mm ²
Nominal cross section 36 kV max	400 mm ²

Logistics data

Article name	CHMSV 36kV 240-400
Article number	258146
Delivery scope	Thick wall heat shrinkable insulation tubes
	Thick wall heat shrinkable outer tube with hot melt adhesive
	Silicone field control elements
	Copper braid tube
	Pressure springs
	Innovative screw connector with conductive cover
	Field control filling tape (blue)
	Assembly material
	Assembly instructions
Shelf life description	Unlimited shelf life
Country of origin	Germany
Customs tariff number	39269097
EAN/GTIN	4010311139814

Packaging data

Alternative unit of measure	Carton	Pal. OW
Base quantity	1	25
Base unit of measure	Piece	Piece
Length (mm)	723	1200
Width (mm)	238	800
Height (mm)	190	1130
Net weight (kg)	2.81	70.25
Gross weight (kg)	2.81	88.45