

3-core straight-through joint with screw cable lugs  
for 3-core polymeric cables

Hybrid straight-through joints CHMSV3 are suitable for all 3-core polymeric-insulated cables (PVC, PE, XLPE, EPR). They allow the connection of cables with copper wire screen with different cross sections and conductor materials even with different cable designs concerning the semi-conductive layer (graphite-coated, removable or strippable). With screw connectors.



Product description

Article name	CHMSV3 36kV 95-240
Article number	297311
Notes	Straight-through joints with larger cross-section available on request.
Optional accessory	EGA earthing kit for cables with tape screen (see Connecting technology)

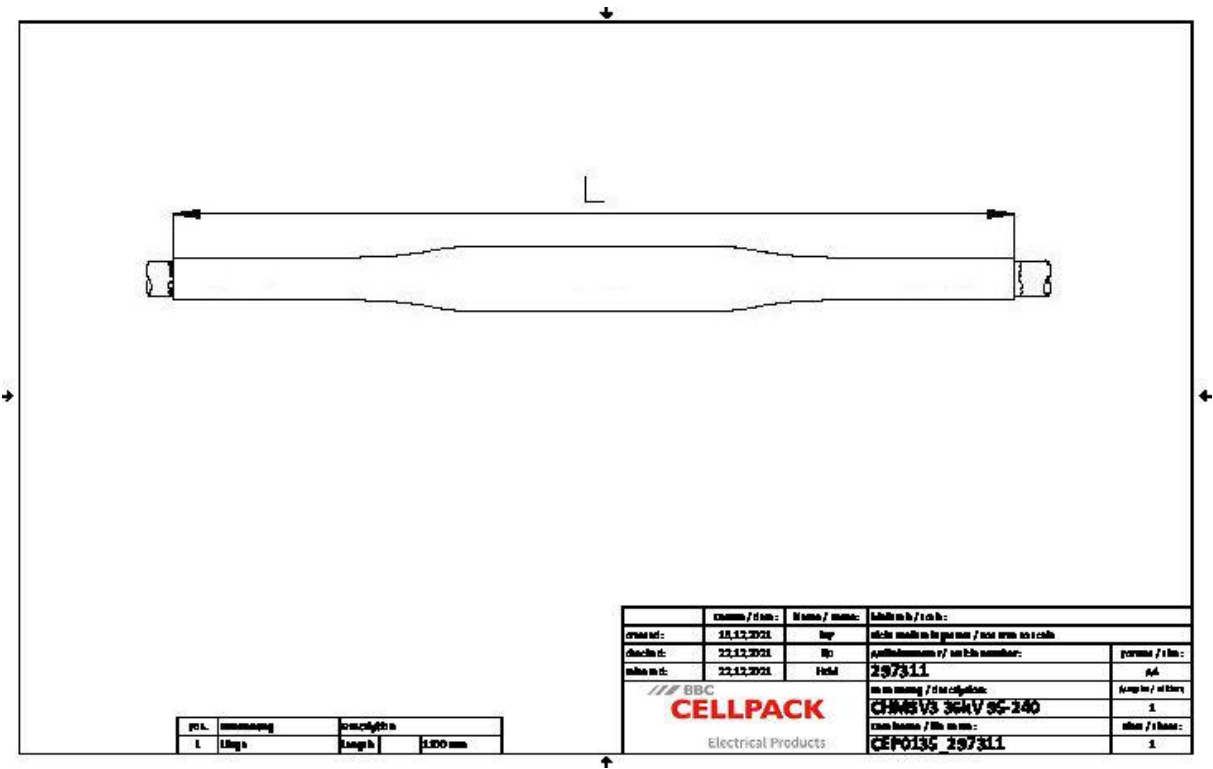
Characteristics

Reliable stress control due to flexible silicone stress control elements
For both copper and aluminium conductors
For all cables with copper wire screen
Wide conductor and cross-section range
Quick, safe and easy assembly
Ready for immediate operation
Suitable for a wide range of applications due to integrated screw connector

Applications

Indoor
Outdoor
Underground
Water
Installation ducts
Ductwork

Technical data



Article name	CHMSV3 36kV 95-240
Article number	297311
Voltage levels	U0/U (Um) 18/30 (36) kV - 19/33 (36) kV
Test standards	CENELEC HD 629.1
Length L	1100 mm
Diameter over core insulation after removal of the outer conductive layer min	24.2 mm
Nominal cross section 36 kV min	95 mm²
Nominal cross section 36 kV max	240 mm²

## Logistics data

Article name	CHMSV3 36kV 95-240
Article number	297311
Delivery scope	Thick wall heat shrinkable insulation tubes
	Thick wall heat shrinkable outer tube with hot melt adhesive
	Silicone field control elements
	Copper braid tape
	Field control filling tape (blue)
	Innovative screw connector with conductive cover
	Screw connector for copper-wire screen
	Assembly material
	Assembly instructions
Shelf life description	Unlimited shelf life
Country of origin	Germany
Customs tariff number	39269097
EAN/GTIN	4010311153421

## Packaging data

Alternative unit of measure	Carton	Pal. EU
Base quantity	1	12
Base unit of measure	Piece	Piece
Length (mm)	865	1200
Width (mm)	369	800
Height (mm)	170	1130
Net weight (kg)	5.635	67.62
Gross weight (kg)	5.635	96.62