

3-core straight-through joint with screw cable lugs  
for connecting from 3-core with three 1-core polymeric cables

Hybrid straight-through joints CHMSV3-1 are suitable for connecting 3-core polymeric cables with three 1-core polymeric cables (PVC, PE, XLPE, EPR). They allow the connection of cables with copper wire screen with different cross sections and conductor materials even with different cable designs concerning the semi-conductive layer (graphite-coated, removable or strippable). With screw connectors.



Product description

|                    |                                                                          |
|--------------------|--------------------------------------------------------------------------|
| Article name       | CHMSV3-1 12kV 70-150                                                     |
| Article number     | 297462                                                                   |
| Notes              | Straight-through joints with larger cross-section available on request.  |
| Optional accessory | EGA earthing kit for cables with tape screen (see Connecting technology) |

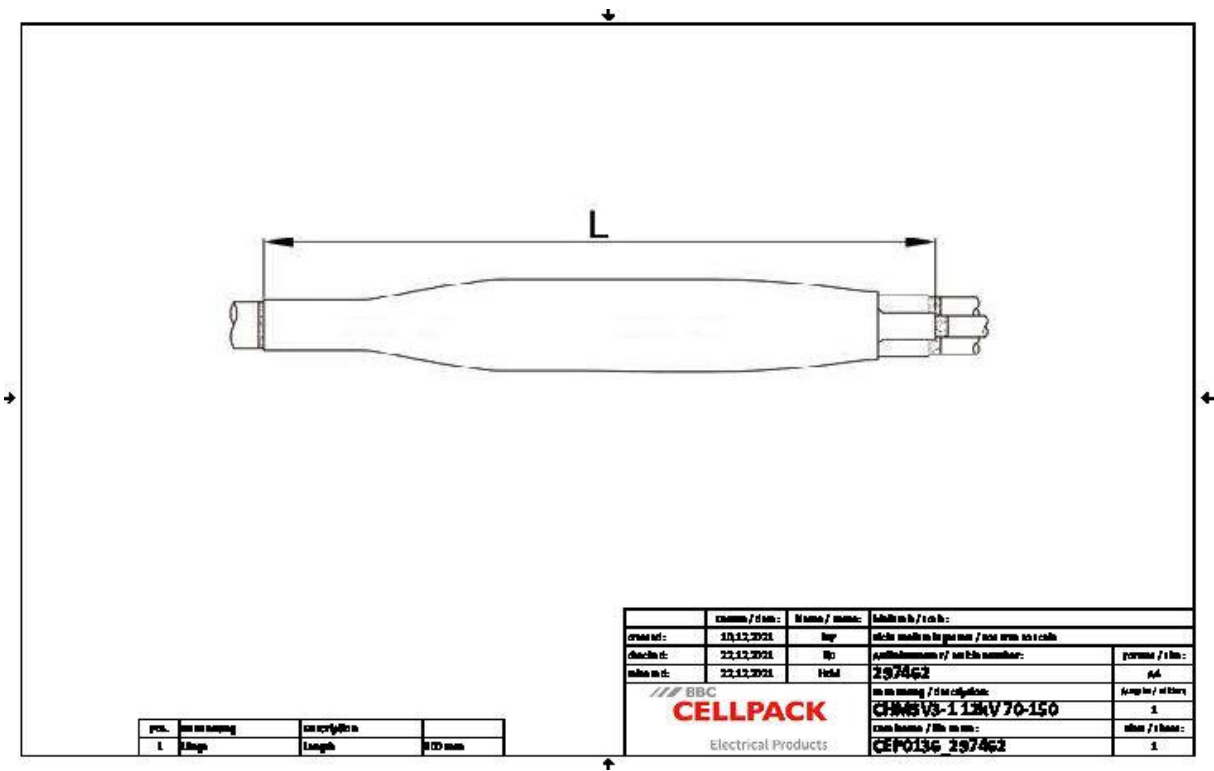
Characteristics

|                                                                             |
|-----------------------------------------------------------------------------|
| Reliable stress control due to flexible silicone stress control elements    |
| For both copper and aluminium conductors                                    |
| For all cables with copper wire screen                                      |
| Wide conductor and cross-section range                                      |
| Quick, safe and easy assembly                                               |
| Ready for immediate operation                                               |
| Suitable for a wide range of applications due to integrated screw connector |

Applications

|                    |
|--------------------|
| Indoor             |
| Outdoor            |
| Underground        |
| Water              |
| Installation ducts |
| Ductwork           |

Technical data



|                                                                               |                                          |
|-------------------------------------------------------------------------------|------------------------------------------|
| Article name                                                                  | CHMSV3-1 12kV 70-150                     |
| Article number                                                                | 297462                                   |
| Voltage levels                                                                | U0/U (Um) 6/10 (12) kV - 6,35/11 (12) kV |
| Test standards                                                                | CENELEC HD 629.1                         |
| Length L                                                                      | 900 mm                                   |
| Diameter over core insulation after removal of the outer conductive layer min | 14.7 mm                                  |
| Nominal cross section 12 kV min                                               | 70 mm²                                   |
| Nominal cross section 12 kV max                                               | 150 mm²                                  |

## Logistics data

|                        |                                                              |
|------------------------|--------------------------------------------------------------|
| Article name           | CHMSV3-1 12kV 70-150                                         |
| Article number         | 297462                                                       |
| Delivery scope         | Thick wall heat shrinkable insulation tubes                  |
|                        | Thick wall heat shrinkable outer tube with hot melt adhesive |
|                        | Silicone field control elements                              |
|                        | Copper braid tape                                            |
|                        | Field control filling tape (blue)                            |
|                        | Innovative screw connector with conductive cover             |
|                        | Screw connector for copper-wire screen                       |
|                        | Assembly material                                            |
|                        | Assembly instructions                                        |
| Shelf life description | Unlimited shelf life                                         |
| Country of origin      | Germany                                                      |
| Customs tariff number  | 39269097                                                     |
| EAN/GTIN               | 4010311153773                                                |

## Packaging data

|                             |        |         |
|-----------------------------|--------|---------|
| Alternative unit of measure | Carton | Pal. OW |
| Base quantity               | 1      | 25      |
| Base unit of measure        | Piece  | Piece   |
| Lenght (mm)                 | 728    | 1200    |
| Width (mm)                  | 235    | 800     |
| Height (mm)                 | 195    | 1130    |
| Net weight (kg)             | 3.248  | 81.2    |
| Gross weight (kg)           | 3.248  | 99.4    |