

Transition joint

from belted cables / H-Type cables to three 1-core polymeric cables

Hybrid transition joints CHMPR3-1 for transition to three 1-core polymeric-insulated cables, are suitable for belted cables and H-Type cables up to 17.5 kV. The scope of application can be reduced by an appropriate padding set for the massimpregnated paper cable. Suitable for compression connectors.



Product description

Article name	CHMPR3-1 17kV 240-400
Article number	197606
Notes	Other transition joints available on request.
Optional accessory	Compression connectors (see Connecting technology)

Characteristics

Reliable stress control due to flexible silicone stress control elements

Wide cross-section range

Quick, safe and easy assembly

Ready for immediate operation

Applications

Indoor

Outdoor

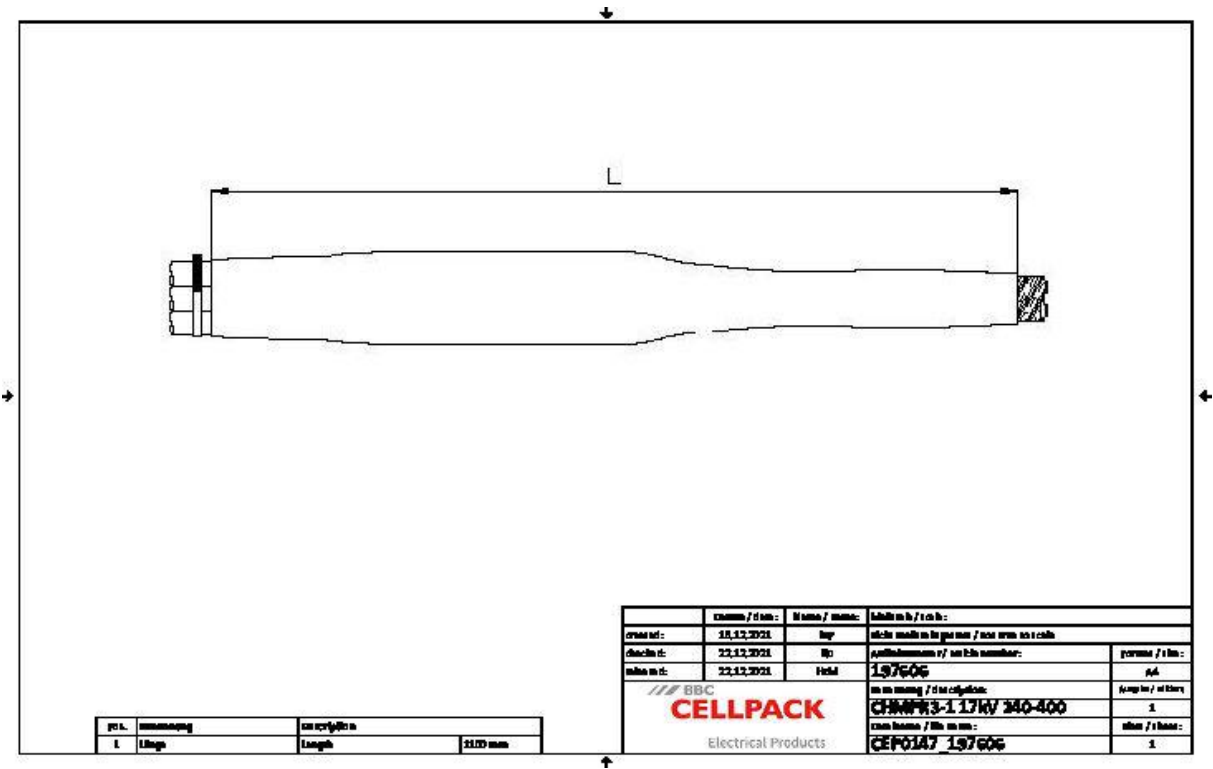
Underground

Water

Installation ducts

Ductwork

Technical data



Article name	CHMPR3-1 17kV 240-400
Article number	197606
Voltage levels	U0/U (Um) 6/10 (12) kV - 8,7/15 (17,5) kV
Test standards	DIN VDE 0278-629-2
Diameter Connector 12kV max	42 mm
Diameter Connector 17,5kV max	42 mm
Length Connector 12kV max	170 mm
Length Connector 17,5kV max	170 mm
Length L	1100 mm
Diameter over core insulation after removal of the outer conductive layer min	23.1 mm
Nominal cross section 12 kV min	300 mm ²
Nominal cross section 12 kV max	400 mm ²
Nominal cross section 17,5 kV min	240 mm ²
Nominal cross section 17,5 kV max	400 mm ²

Logistics data

Article name	CHMPR3-1 17kV 240-400
Article number	197606
Delivery scope	Spreader cap
	Thick wall heat shrinkable outer tube with hot melt adhesive
	Oil barrier tubing
	Silicone field control elements
	Earthing wire
	Heat shrinkable tubes
	Copper braid tape
	Assembly material
	Pressure spring
	Field control filling tape (blue)
	Sealing tape
	Fire protection wrapping
	Assembly instructions
Shelf life description	Unlimited shelf life
Country of origin	Germany
Customs tariff number	39269097
EAN/GTIN	4010311051475

Packaging data

Alternative unit of measure	Carton	Pal. OW
Base quantity	1	6
Base unit of measure	Piece	Piece
Lenght (mm)	1100	1200
Width (mm)	320	800
Height (mm)	320	1130
Net weight (kg)	6.306	37.836
Gross weight (kg)	6.306	56.036