

Straight-through joint

for 3 lead sheath cables up to 36 kV

Hybrid straight-through joints CHMPP(3Pb)3 are suitable for all 3 lead sheath cables up to 36 kV. Suitable for compression connectors.



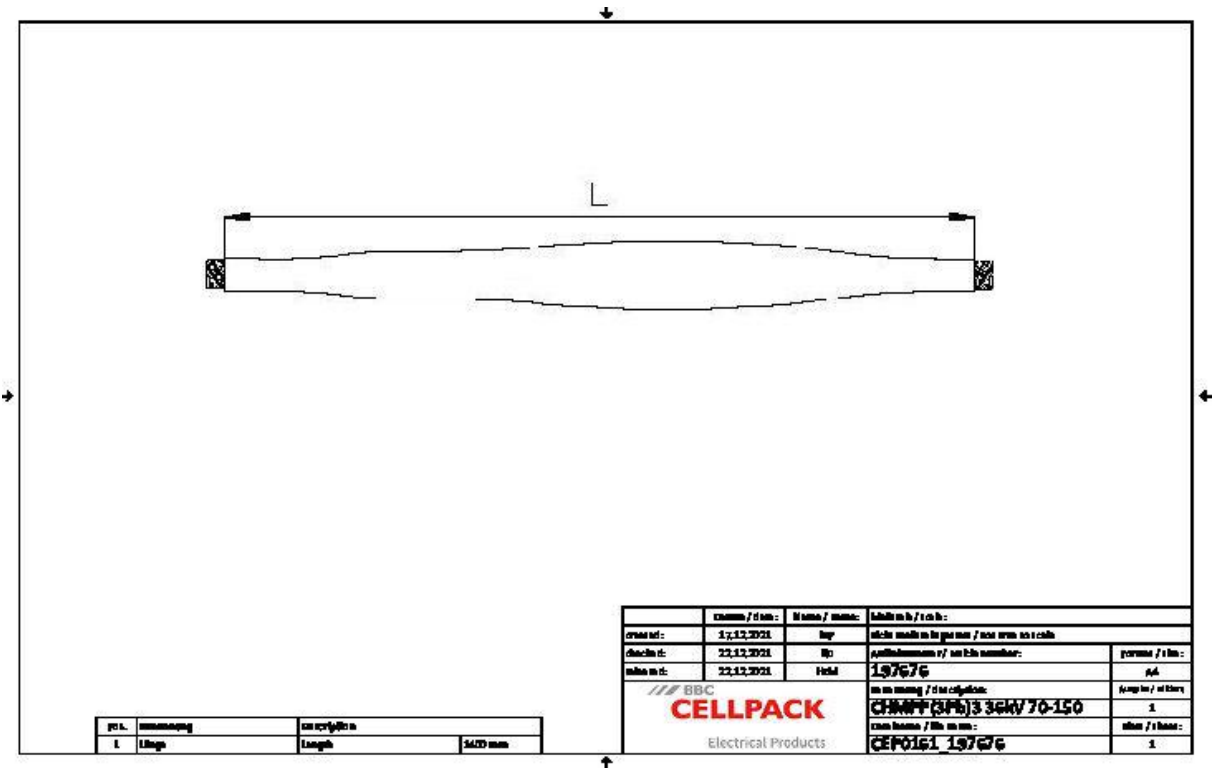
Product description

Article name	CHMPP(3Pb)3 36kV 70-150
Article number	197676
Optional accessory	Compression connectors (see Connecting technology)

Characteristics
Wide cross-section range
Quick, safe and easy assembly
Ready for immediate operation

Applications
Indoor
Outdoor
Underground
Water
Installation ducts
Ductwork

Technical data



Article name	CHMPP(3Pb)3 36kV 70-150
Article number	197676
Voltage levels	U0/U (Um) 18/30 (36) kV - 19/33 (36) kV
Test standards	DIN VDE 0278-629-2
Diameter Connector 36kV max	25 mm
Length Connector 24kV max	150 mm
Length L	1400 mm
Diameter over core insulation after removal of the outer conductive layer min	24 mm
Nominal cross section 36 kV min	70 mm²
Nominal cross section 36 kV max	150 mm²

Logistics data

Article name	CHMPP(3Pb)3 36kV 70-150
Article number	197676
Delivery scope	Spreader cap
	Thick wall heat shrinkable outer tube with hot melt adhesive
	Oil barrier tubing
	Silicone field control elements
	Earthing wire
	Heat shrinkable tubes
	Copper braid tape
	Assembly material
	Pressure spring
	Field control filling tape (blue)
	Sealing tape
	Fire protection wrapping
	Assembly instructions
Shelf life description	Unlimited shelf life
Country of origin	Germany
Customs tariff number	39269097
EAN/GTIN	4010311052137

Packaging data

Alternative unit of measure	Carton	Pal. EU
Base quantity	1	6
Base unit of measure	Piece	Piece
Lenght (mm)	1110	1100
Width (mm)	330	320
Height (mm)	338	320
Net weight (kg)	8.273	49.638
Gross weight (kg)	8.273	78.638