

Straight-through joint

for 3 lead sheath cables up to 36 kV

Hybrid straight-through joints CHMPP(3Pb)3 are suitable for all 3 lead sheath cables up to 36 kV. Suitable for compression connectors.

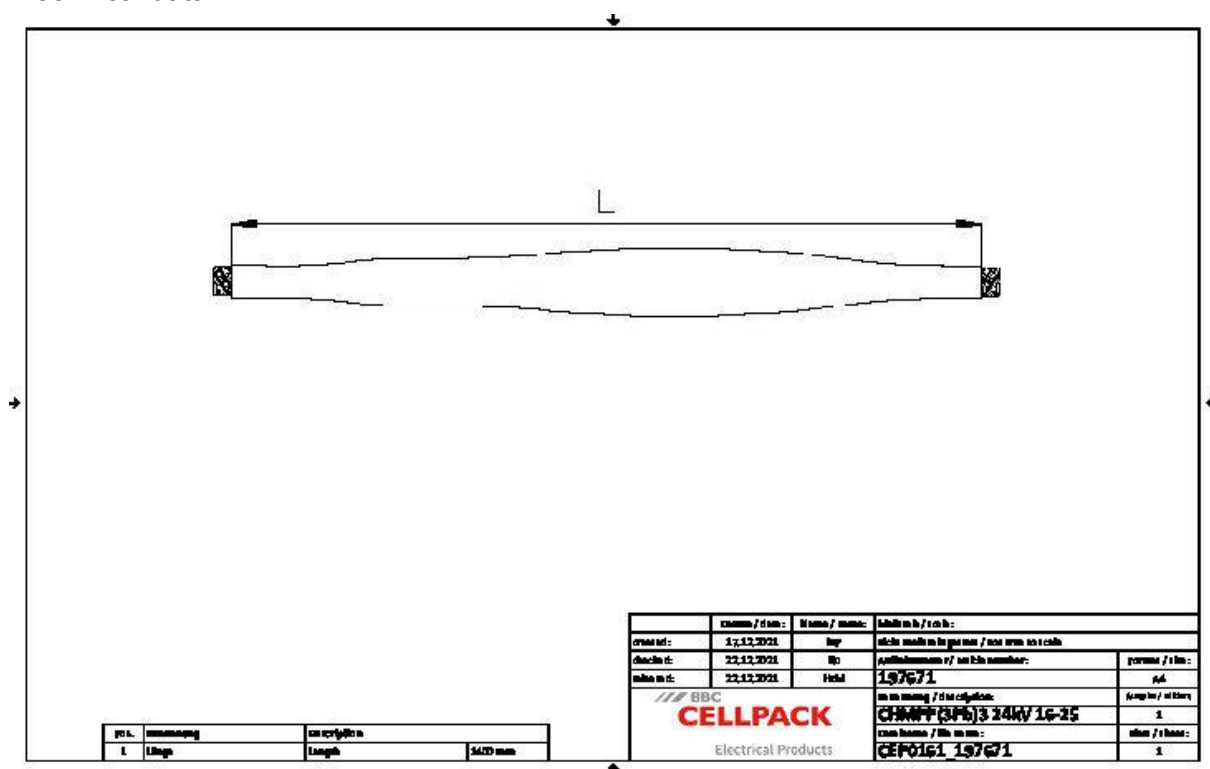


Product description

Article name	CHMPP(3Pb)3 24kV 16-25
Article number	197671
Optional accessory	Compression connectors (see Connecting technology)

Characteristics
Wide cross-section range
Quick, safe and easy assembly
Ready for immediate operation

Applications
Indoor
Outdoor
Underground
Water
Installation ducts
Ductwork



Article name	CHMPP(3Pb)3 24kV 16-25
Article number	197671
Voltage levels	U0/U (Um) 12/20 (24) kV - 12,7/22 (24) kV
Test standards	DIN VDE 0278-629-2
Diameter Connector 24kV max	20 mm
Length Connector 24kV max	100 mm
Length L	1400 mm
Diameter over core insulation after removal of the outer conductive layer min	12.6 mm
Nominal cross section 24 kV min	16 mm ²
Nominal cross section 24 kV max	25 mm ²

Logistics data

Article name	CHMPP(3Pb)3 24kV 16-25
Article number	197671
Delivery scope	Spreader cap
	Thick wall heat shrinkable outer tube with hot melt adhesive
	Oil barrier tubing
	Silicone field control elements
	Earthing wire
	Heat shrinkable tubes
	Copper braid tape
	Assembly material
	Pressure spring
	Field control filling tape (blue)
	Sealing tape
	Fire protection wrapping
	Assembly instructions
Shelf life description	Unlimited shelf life
Country of origin	Germany
Customs tariff number	39269097
EAN/GTIN	4010311052083

Packaging data

Alternative unit of measure	Carton	Pal. OW
Base quantity	1	6
Base unit of measure	Piece	Piece
Lenght (mm)	1283	1200
Width (mm)	363	800
Height (mm)	366	1480
Net weight (kg)	6.319	37.914
Gross weight (kg)	6.319	56.114