

Transition joint with screw connectors  
for 3 lead sheath cables to three 1-core polymeric cables

Hybrid transition joints CHMP(3Pb)SV3-1 for transition to three 1-core polymericinsulated cables are suitable for all 3 lead sheath cables for 24 kV. With screw connectors.



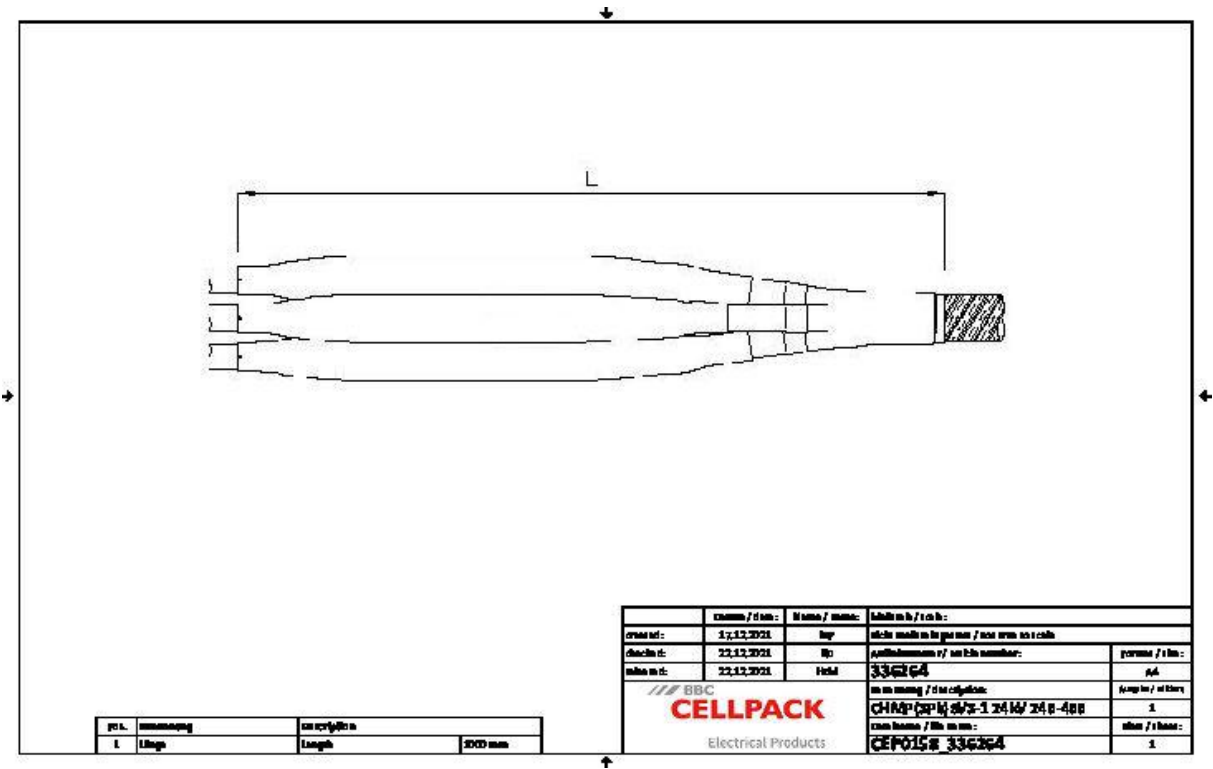
Product description

Article name	CHMP(3Pb)SV3-1 24kV 240-400
Article number	336264

Characteristics
Reliable stress control due to flexible silicone stress control elements
Wide cross-section range
Quick, safe and easy assembly
Ready for immediate operation

Applications
Indoor
Outdoor
Underground
Water
Installation ducts
Ductwork

Technical data



Article name	CHMP(3Pb)SV3-1 24kV 240-400
Article number	336264
Voltage levels	U0/U (Um) 12/20 (24) kV - 12,7/22 (24) kV
Test standards	DIN VDE 0278-629-2
Length L	1000 mm
Diameter over core insulation after removal of the outer conductive layer min	27.3 mm
Nominal cross section 24 kV min	240 mm <sup>2</sup>
Nominal cross section 24 kV max	400 mm <sup>2</sup>

## Logistics data

Article name	CHMP(3Pb)SV3-1 24kV 240-400
Article number	336264
Delivery scope	Spreader cap
	Thick wall heat shrinkable outer tube with hot melt adhesive
	Oil barrier tubing
	Silicone field control elements
	Earthing wire
	Heat shrinkable tubes
	Copper braid tape
	Assembly material
	Pressure spring
	Field control filling tape (blue)
	Sealing tape
	Fire protection wrapping
	Innovative screw connector with conductive cover
	Assembly instructions
Shelf life description	Unlimited shelf life
Country of origin	Germany
Customs tariff number	39269097
EAN/GTIN	4010311165172

## Packaging data

Alternative unit of measure	Carton	Pal. OW
Base quantity	1	8
Base unit of measure	Piece	Piece
Lenght (mm)	1100	1200
Width (mm)	330	800
Height (mm)	338	1130
Net weight (kg)	8.851	70.808
Gross weight (kg)	8.851	89.008