

Transition joint

for 3 lead sheath cables to three 1-core polymeric cables

Hybrid transition joints CHMP(3Pb)3-1 for transition to three 1-core polymericinsulated cables are suitable for all 3 lead sheath cables up to 36 kV. The scope of application can be reduced by an appropriate padding set for the mass-impregnated paper cable. Suitable for compression connectors.



Product description

Article name	CHMP(3Pb)3-1 17kV 120-240
Article number	197629
Optional accessory	Compression connectors (see Connecting technology)

Characteristics

Reliable stress control due to flexible silicone stress control elements

Wide cross-section range

Quick, safe and easy assembly

Ready for immediate operation

Applications

Indoor

Outdoor

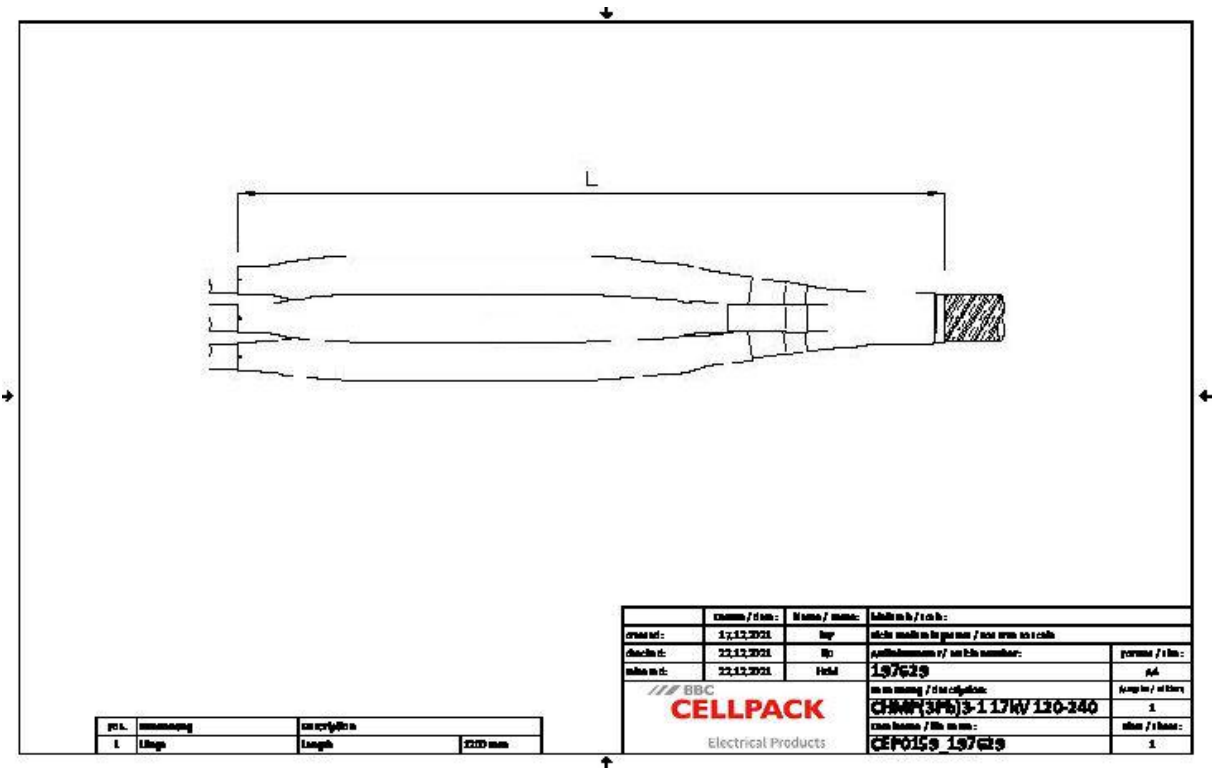
Underground

Water

Installation ducts

Ductwork

Technical data



Article name	CHMP(3Pb)3-1 17kV 120-240
Article number	197629
Voltage levels	U0/U (Um) 6/10 (12) kV - 8,7/15 (17,5) kV
Test standards	DIN VDE 0278-629-2
Diameter Connector 12kV max	36 mm
Diameter Connector 17,5kV max	34 mm
Length Connector 12kV max	150 mm
Length Connector 17,5kV max	150 mm
Length L	1200 mm
Diameter over core insulation after removal of the outer conductive layer min	19.9 mm
Nominal cross section 12 kV min	150 mm²
Nominal cross section 12 kV max	300 mm²
Nominal cross section 17,5 kV min	120 mm²
Nominal cross section 17,5 kV max	240 mm²

Logistics data

Article name	CHMP(3Pb)3-1 17kV 120-240
Article number	197629
Delivery scope	Spreader cap
	Thick wall heat shrinkable outer tube with hot melt adhesive
	Oil barrier tubing
	Silicone field control elements
	Earthing wire
	Heat shrinkable tubes
	Copper braid tape
	Assembly material
	Pressure spring
	Field control filling tape (blue)
	Sealing tape
	Fire protection wrapping
	Assembly instructions
Shelf life description	Unlimited shelf life
Country of origin	Germany
Customs tariff number	39269097
EAN/GTIN	4010311051666

Packaging data

Alternative unit of measure	Carton	Pal. OW
Base quantity	1	12
Base unit of measure	Piece	Piece
Length (mm)	865	1200
Width (mm)	369	800
Height (mm)	170	1130
Net weight (kg)	5.611	67.332
Gross weight (kg)	5.611	85.532