

3-core straight-through joint  
for 3-core polymeric cables

Hybrid straight-through joints CHM3 are suitable for all 3-core polymeric-insulated cables (PVC, PE, XLPE, EPR). They allow the connection of cables with different cross sections and conductor materials even with different cable designs concerning the semi-conductive layer (graphite-coated, removable or strippable) and screen design (copper wire or tape screen). Suitable for compression connectors.



Product description

Article name	CHM3 17kV 70-240
Article number	194298
Notes	Can be used also for cables Um = 7,2 kV, then the minimum diameter over conductor insulation has to be checked. Straight-through joints with larger cross-section available on request.
Optional accessory	Compression connectors (see Connecting technology)

Characteristics

Reliable stress control due to flexible silicone stress control elements

For both copper and aluminium conductors

Wide conductor and cross-section range

Quick, safe and easy assembly

Ready for immediate operation

Applications

Indoor

Outdoor

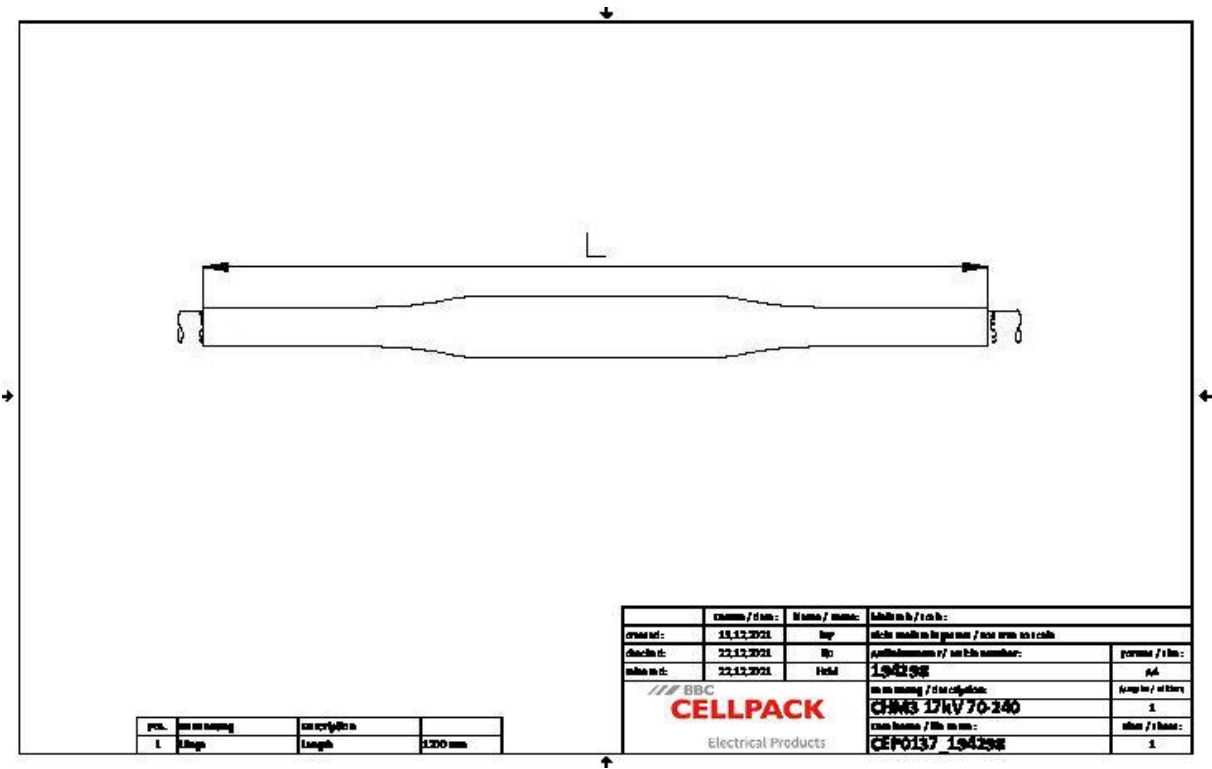
Underground

Water

Installation ducts

Ductwork

Technical data



Article name	CHM3 17kV 70-240
Article number	194298
Voltage levels	U0/U (Um) 8,7/15 (17,5) kV
Test standards	CENELEC HD 629.1
Diameter Connector 17,5kV max	32 mm
Length Connector 17,5kV max	145 mm
Length L	1200 mm
Diameter over core insulation after removal of the outer conductive layer min	17.3 mm
Nominal cross section 17,5 kV min	70 mm²
Nominal cross section 17,5 kV max	240 mm²

## Logistics data

Article name	CHM3 17kV 70-240
Article number	194298
Delivery scope	Thick wall heat shrinkable insulation tubes
	Thick wall heat shrinkable outer tube with hot melt adhesive
	Silicone field control elements
	Copper braid tube
	Field control filling tape (blue)
	Pressure springs
	Assembly material
	Assembly instructions
Shelf life description	Unlimited shelf life
Country of origin	Germany
Customs tariff number	39269097
EAN/GTIN	4010311047409

## Packaging data

Alternative unit of measure	Carton	Pal. OW
Base quantity	1	12
Base unit of measure	Piece	Piece
Length (mm)	865	1200
Width (mm)	369	800
Height (mm)	170	1130
Net weight (kg)	4.385	52.62
Gross weight (kg)	4.385	70.82