

1-core straight-through joint

with screw connector for 1-core polymeric cables

Hybrid straight-through joints CHM...V are suitable for all 1-core polymeric insulated cables (PVC, PE, XLPE, EPR). They allow the connection of cables with different cross sections and conductor materials even with different cable designs concerning the semi-conductive layer (graphite-coated, removable or strippable) and screen design (copper wire or tape screen). With screw connector.



Product description

Article name	CHM 24kV 400-630 V
Article number	347954
Notes	Can be used also for cables $U_m = 7,2$ kV, then the minimum diameter over conductor insulation has to be checked.

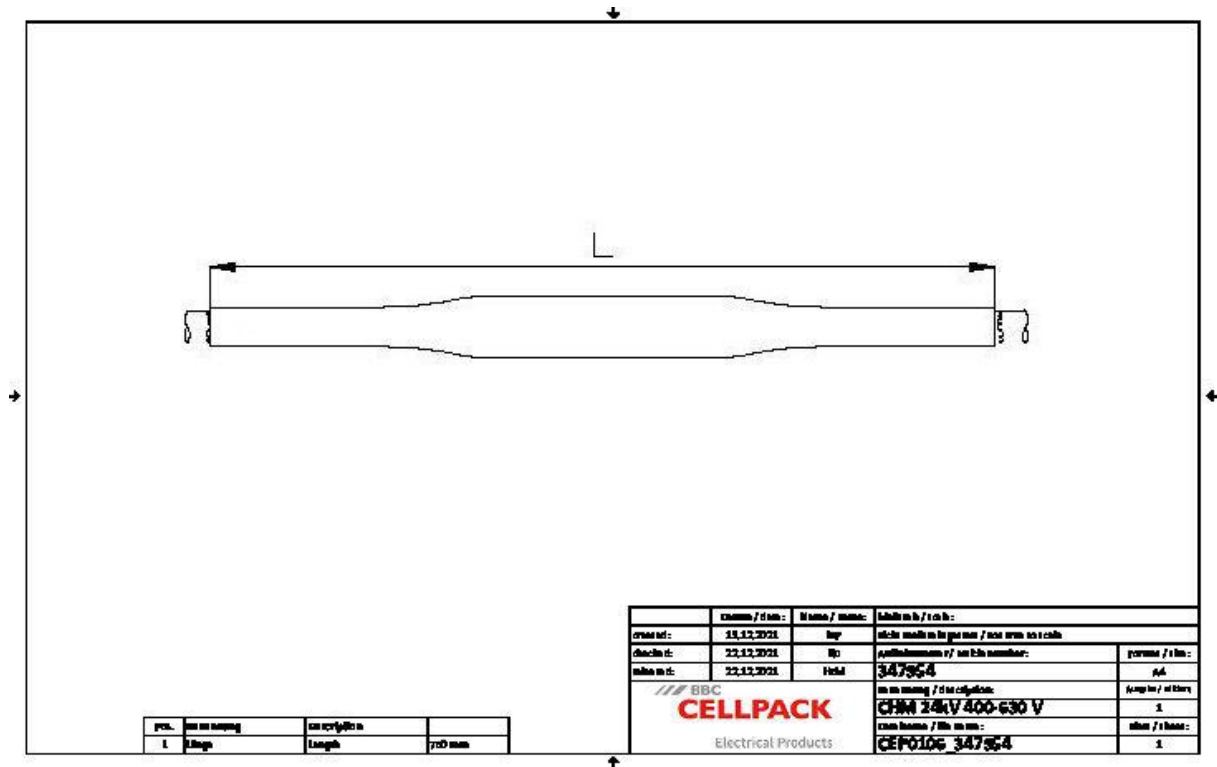
Characteristics

Reliable stress control due to flexible silicone stress control elements
For both copper and aluminium conductors
For all cables with copper wire or tape screen
Wide conductor and cross-section range
Quick, safe and easy assembly
Ready for immediate operation
Suitable for a wide range of applications due to integrated screw connector

Applications

Indoor
Outdoor
Underground
Water
Installation ducts
Ductwork

Technical data



Article name	CHM 24kV 400-630 V
Article number	347954
Voltage levels	U0/U (Um) 12/20 (24) kV - 12,7/22 (24) kV
Test standards	CENELEC HD 629.1
Length L	750 mm
Diameter over core insulation after removal of the outer conductive layer min	32.7 mm
Nominal cross section 12 kV min	630 mm ²
Nominal cross section 12 kV max	630 mm ²
Nominal cross section 17,5 kV min	500 mm ²
Nominal cross section 17,5 kV max	630 mm ²
Nominal cross section 24 kV min	400 mm ²
Nominal cross section 24 kV max	630 mm ²

Logistics data

Article name	CHM 24kV 400-630 V
Article number	347954
Delivery scope	Thick wall heat shrinkable insulation tubes Thick wall heat shrinkable outer tube with hot melt adhesive Silicone field control elements Copper braid tube Pressure springs Screw connector Field control filling tape (blue) Assembly material Assembly instructions
Shelf life description	Unlimited shelf life
Country of origin	Germany
Customs tariff number	39269097
EAN/GTIN	4010311169064

Packaging data

Alternative unit of measure	Carton	Pal. EU
Base quantity	1	12
Base unit of measure	Piece	Piece
Lenght (mm)	873	1200
Width (mm)	380	800
Height (mm)	175	1130
Net weight (kg)	3.713	44.556
Gross weight (kg)	3.683	73.196