

1-core straight-through joint
with screw connector for 1-core polymeric cables

Hybrid straight-through joints CHM...V are suitable for all 1-core polymericinsulated cables (PVC, PE, XLPE, EPR). They allow the connection of cables with different cross sections and conductor materials even with different cable designs concerning the semi-conductive layer (graphite-coated, removable or strippable) and screen design (copper wire or tape screen). With screw connector.



Product description

Article name	CHM 42kV 400-630 V
Article number	421454

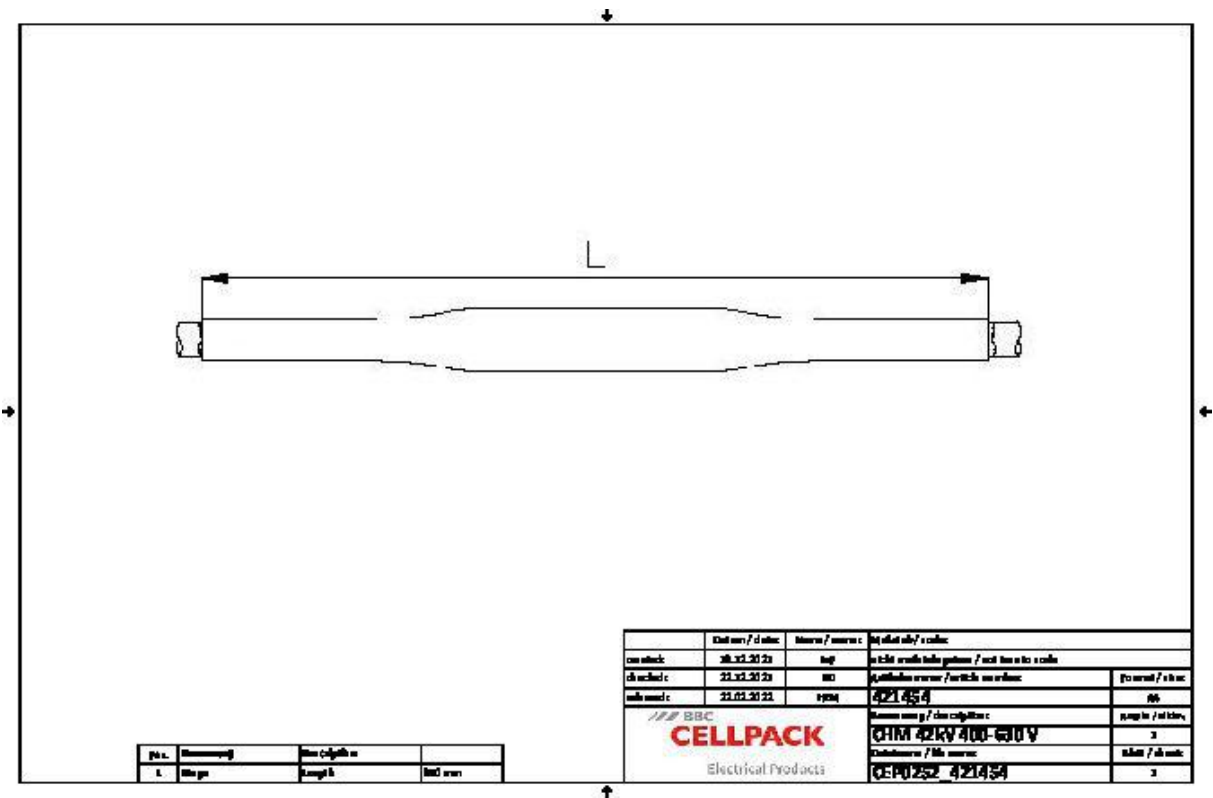
Characteristics

Reliable stress control due to flexible silicone stress control elements
For both copper and aluminium conductors
For all cables with copper wire or tape screen
Wide conductor and cross-section range
Quick, safe and easy assembly
Ready for immediate operation
Suitable for a wide range of applications due to integrated screw connector

Applications

Indoor
Outdoor
Underground
Water
Installation ducts
Ductwork

Technical data



Article name	CHM 42kV 400-630 V
Article number	421454
Voltage levels	U0/U (Um) 20/35 (42) kV - 20,8/36 (42) kV
Test standards	CENELEC HD 629.1
Length L	850 mm
Diameter over core insulation after removal of the outer conductive layer min	40.5 mm
Diameter over core insulation after removal of the outer conductive layer max	48.7 mm
Nominal cross section 42 kV min	400 mm²
Nominal cross section 42 kV max	630 mm²

Logistics data

Article name	CHM 42kV 400-630 V
Article number	421454
Delivery scope	Thick wall heat shrinkable insulation tubes
	Thick wall heat shrinkable outer tube with hot melt adhesive
	Silicone field control elements
	Copper braid tube
	Pressure springs
	Screw connector
	Field control filling tape (blue)
	Assembly material
	Assembly instructions
Shelf life description	Unlimited shelf life
Country of origin	Germany
Customs tariff number	39269097
EAN/GTIN	4010311192277

Packaging data

Alternative unit of measure	Carton	Pal. OW
Base quantity	1	12
Base unit of measure	Piece	Piece
Length (mm)	865	1200
Width (mm)	369	800
Height (mm)	170	1130
Net weight (kg)	4.784	57.408
Gross weight (kg)	4.784	75.608