

1-core outdoor cable termination
for 1-core polymeric cables

Hybrid cable terminations CHE-F are suitable for all 1-core polymeric-insulated cables (PVC, PE, XLPE, EPR) with different types of semi-conductive layers (graphitecoated, removable or strippable) and screen design (copper wire or tape). Suitable for compression or screw cable lugs.



Product description

Article name	CHE-F 36kV 50-150
Article number	194069
Notes	Can be used also for cables Um = 7,2 kV, then the minimum diameter over conductor insulation has to be checked.
Optional accessory	EGA earthing kit for cables with tape screen (see Connecting technology) Compression cable lugs (see Connecting technology)

Characteristics

Flexible silicone stress control elements ensure reliable stress control under all operating conditions

Combination of slip-on and heat shrinkable components

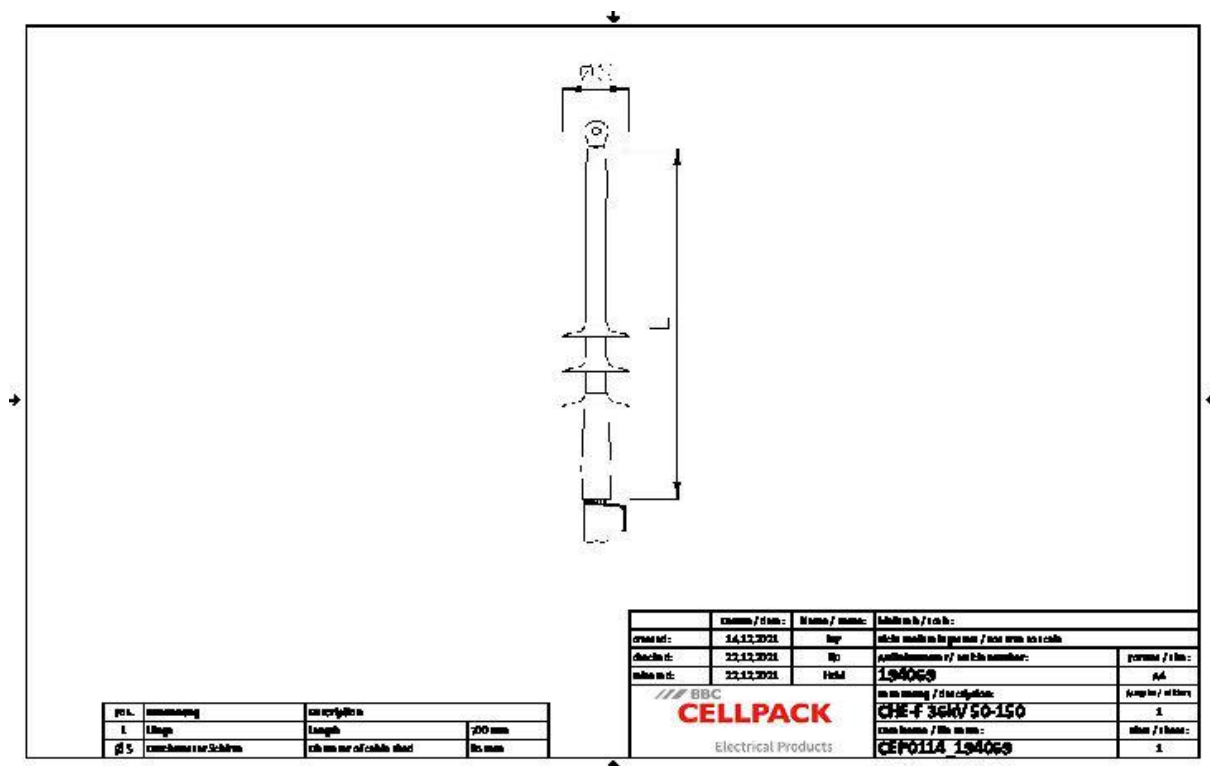
Wide cross-section range

Quick, safe and easy assembly

Ready for immediate operation

Applications

Outdoor



Article name	CHE-F 36kV 50-150
Article number	194069
Voltage levels	U0/U (Um) 18/30 (36) kV - 19/33 (36) kV
Test standards	CENELEC HD 629.1
Length L	700 mm
Diameter over core insulation after removal of the outer conductive layer min	23.1 mm
Diameter over core insulation after removal of the outer conductive layer max	23.1 mm
Number of sheds per phase	4 Pieces
Diameter shed	85 mm
Nominal cross section 36 kV min	50 mm ²
Nominal cross section 36 kV max	150 mm ²

Logistics data

Article name	CHE-F 36kV 50-150
Article number	194069
Delivery scope	Heat shrinkable tube (tracking resistant)
	Silicone field control elements
	Silicone sheds
	1 Set for 3 phases
	Sealing tape
	Assembly material
	Assembly instructions
Shelf life description	Unlimited shelf life
Country of origin	Germany
Customs tariff number	85469090
EAN/GTIN	4010311047089

Packaging data

Alternative unit of measure	Carton	Pal. OW
Base quantity	1	42
Base unit of measure	Piece	Piece
Length (mm)	729	1200
Width (mm)	168	800
Height (mm)	157	1130
Net weight (kg)	1.721	72.282
Gross weight (kg)	1.721	90.482