

Straight separable connector
for polymeric cables for outer cone system terminals type A

Cellplux straight separable connectors CGS are suitable for connecting all polymeric-insulated 1-core cables (PVC, PE, XLPE, EPR), with different types of semi-conductive layers (graphite-coated or strippable) and screen design (wire or tape screen) for switching equipment and transformers having an outer cone system type A, up to maximum network voltage of 24 kV in accordance with EN 50180 and EN 50181.



Product description

Article name	CGS 250A 24kV 25-95 M EGA
Article number	295283
Notes	Separable connectors for alternative cross-sections and for class 5 conductors on request
Optional accessory	EGA earthing kit for cables with tape screen (see Connecting technology)

Characteristics
With capacitive measuring point for voltage checking
Individually tested

Outer semi-conductive layer made of semi-conductive EPDM provides protection from exposed electrical parts

Cable sheath insulation fault test may be performed while under voltage

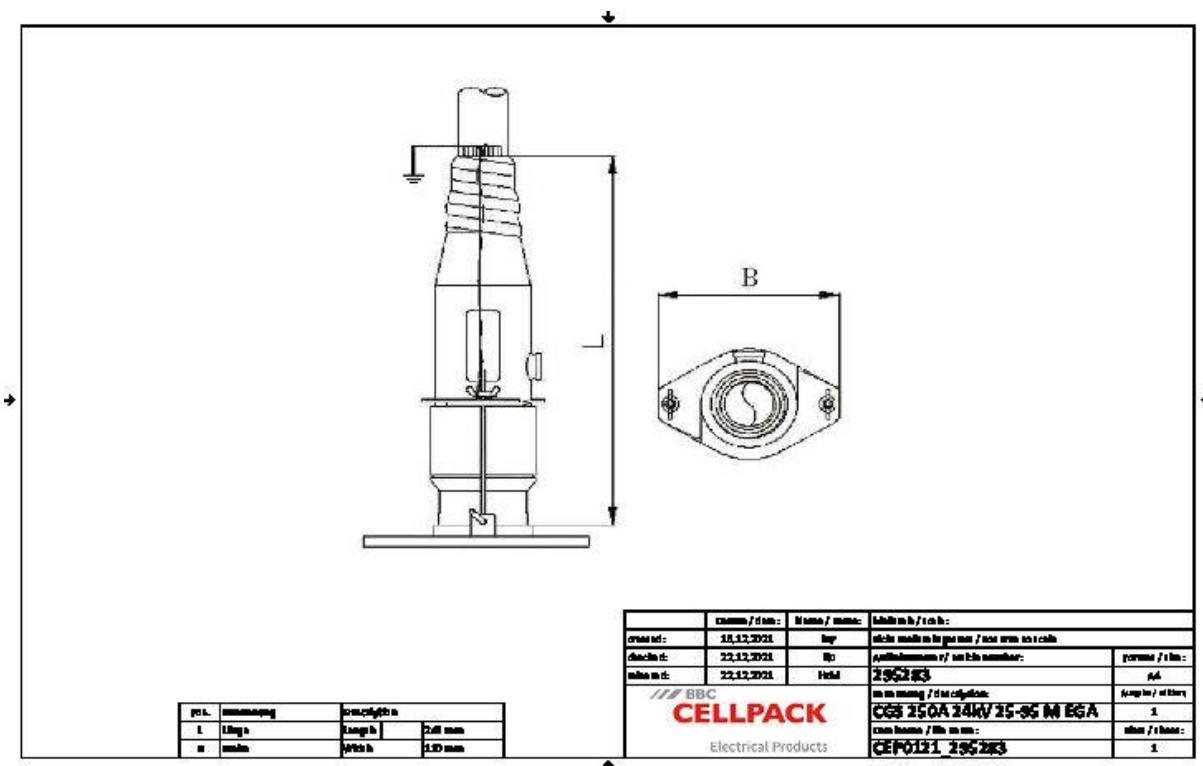
For both copper and aluminium conductors

Quick, safe and easy assembly

Suitable for a wide range of applications due to integrated screw cable lug

Applications
Indoor

Technical data



Article name	CGS 250A 24kV 25-95 M EGA
Article number	295283
Voltage levels	U0/U (Um) 6/10 (12) kV - 12,7/22 (24) kV
Test standards	CENELEC HD 629.1
Width B	248 mm
Height H	110 mm
Diameter over core insulation after removal of the outer conductive layer min	14.7 mm
Diameter over core insulation after removal of the outer conductive layer max	23.4 mm
Nominal cross section 12 kV min	50 mm ²
Nominal cross section 12 kV max	95 mm ²
Nominal cross section 17,5 kV min	25 mm ²
Nominal cross section 17,5 kV max	95 mm ²
Nominal cross section 24 kV min	25 mm ²
Nominal cross section 24 kV max	95 mm ²

Logistics data

Article name	CGS 250A 24kV 25-95 M EGA
Article number	295283
Delivery scope	Set of 3 separable connectors
	Silicone field control elements
	Earthing set
	Assembly material
	Screw cable lugs for main conductor
	Assembly instructions
Shelf life description	Unlimited shelf life
Country of origin	Germany
Customs tariff number	85479000
EAN/GTIN	4010311152189

Packaging data

Alternative unit of measure	Carton	Pal. OW
Base quantity	1	64
Base unit of measure	Piece	Piece
Length (mm)	374	1200
Width (mm)	289	800
Height (mm)	117	1130
Net weight (kg)	3.142	201.088
Gross weight (kg)	3.142	219.288