

Straight separable connector
for polymeric cables for outer cone system terminals type A

Cellplux straight separable connectors CGS are suitable for connecting all polymeric-insulated 1-core cables (PVC, PE, XLPE, EPR), with different types of semi-conductive layers (graphite-coated or strippable) and screen design (wire or tape screen) for switching equipment and transformers having an outer cone system type A, up to maximum network voltage of 24 kV in accordance with EN 50180 and EN 50181.



Product description

Article name	CGS 250A 24kV 70-150 M EGA
Article number	293797
Notes	Separable connectors for alternative cross-sections and for class 5 conductors on request
Optional accessory	EGA earthing kit for cables with tape screen (see Connecting technology)

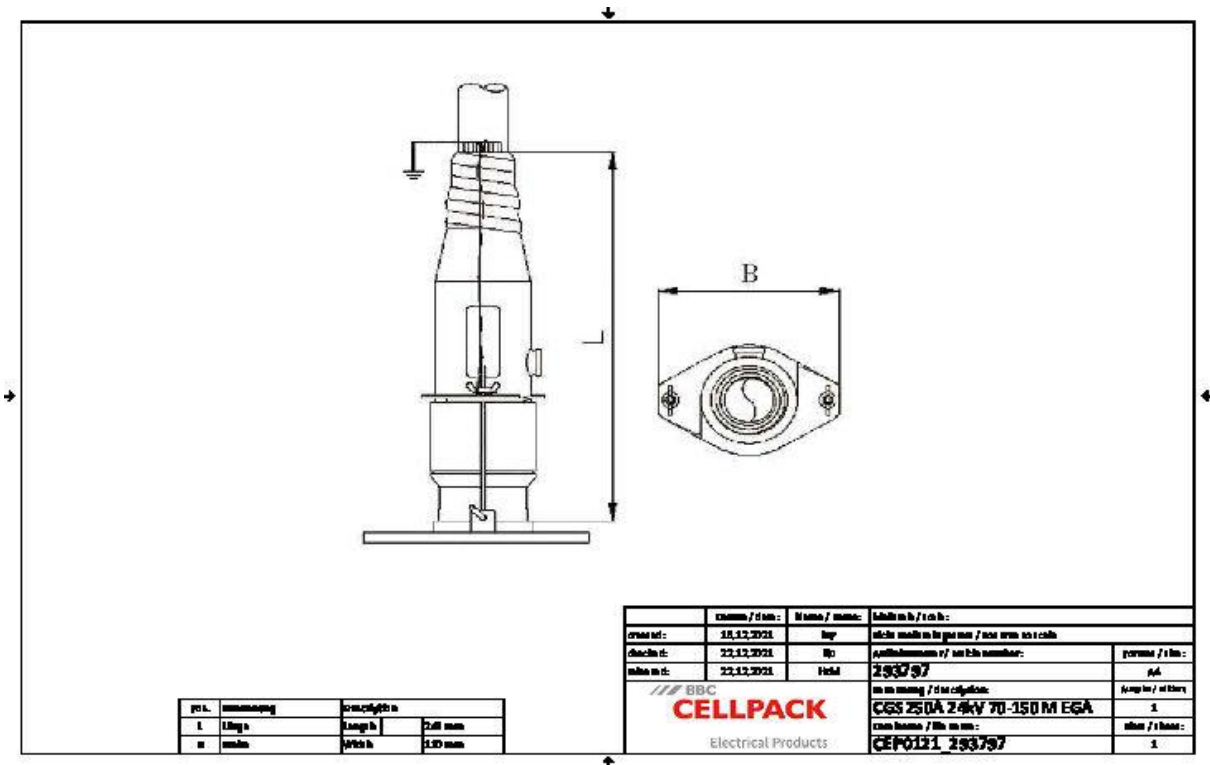
Characteristics

- With capacitive measuring point for voltage checking
- Individually tested
- Outer semi-conductive layer made of semi-conductive EPDM provides protection from exposed electrical parts
- Cable sheath insulation fault test may be performed while under voltage
- For both copper and aluminium conductors
- Quick, safe and easy assembly
- Suitable for a wide range of applications due to integrated screw cable lug

Applications

- Indoor

Technical data



Article name	CGS 250A 24kV 70-150 M EGA
Article number	293797
Voltage levels	U0/U (Um) 6/10 (12) kV - 12,7/22 (24) kV
Test standards	CENELEC HD 629.1
Width B	248 mm
Height H	110 mm
Diameter over core insulation after removal of the outer conductive layer min	19.9 mm
Diameter over core insulation after removal of the outer conductive layer max	28.5 mm
Nominal cross section 12 kV min	120 mm ²
Nominal cross section 12 kV max	150 mm ²
Nominal cross section 17,5 kV min	95 mm ²
Nominal cross section 17,5 kV max	150 mm ²
Nominal cross section 24 kV min	70 mm ²
Nominal cross section 24 kV max	150 mm ²

Logistics data

Article name	CGS 250A 24kV 70-150 M EGA
Article number	293797
Delivery scope	Set of 3 separable connectors
	Silicone field control elements
	Earthing set
	Assembly material
	Screw cable lugs for main conductor
	Assembly instructions
Shelf life description	Unlimited shelf life
Country of origin	Germany
Customs tariff number	85479000
EAN/GTIN	4010311151946

Packaging data

Alternative unit of measure	Carton	Pal. OW
Base quantity	1	64
Base unit of measure	Piece	Piece
Length (mm)	379	1200
Width (mm)	289	800
Height (mm)	118	1130
Net weight (kg)	3.092	197.888
Gross weight (kg)	3.092	216.088