

1-core straight-through joint
with screw connector and heat shrinkable outer protection

Contrax-Straight-through joints CAMSV-S are suitable for all 1-core polymericinsulated cables (PVC, PE, XLPE, EPR). They allow the connection of cables with different cross sections and conductor materials even with different cable designs concerning the semi-conductive layer (removable or strippable) and screen design (wire or tape screen). With screw connector.



Product description

Article name	CAMSV-S 24kV 95-300
Article number	354999
Notes	Can be used also for cables Um = 7,2 kV, then the minimum diameter over conductor insulation has to be checked.

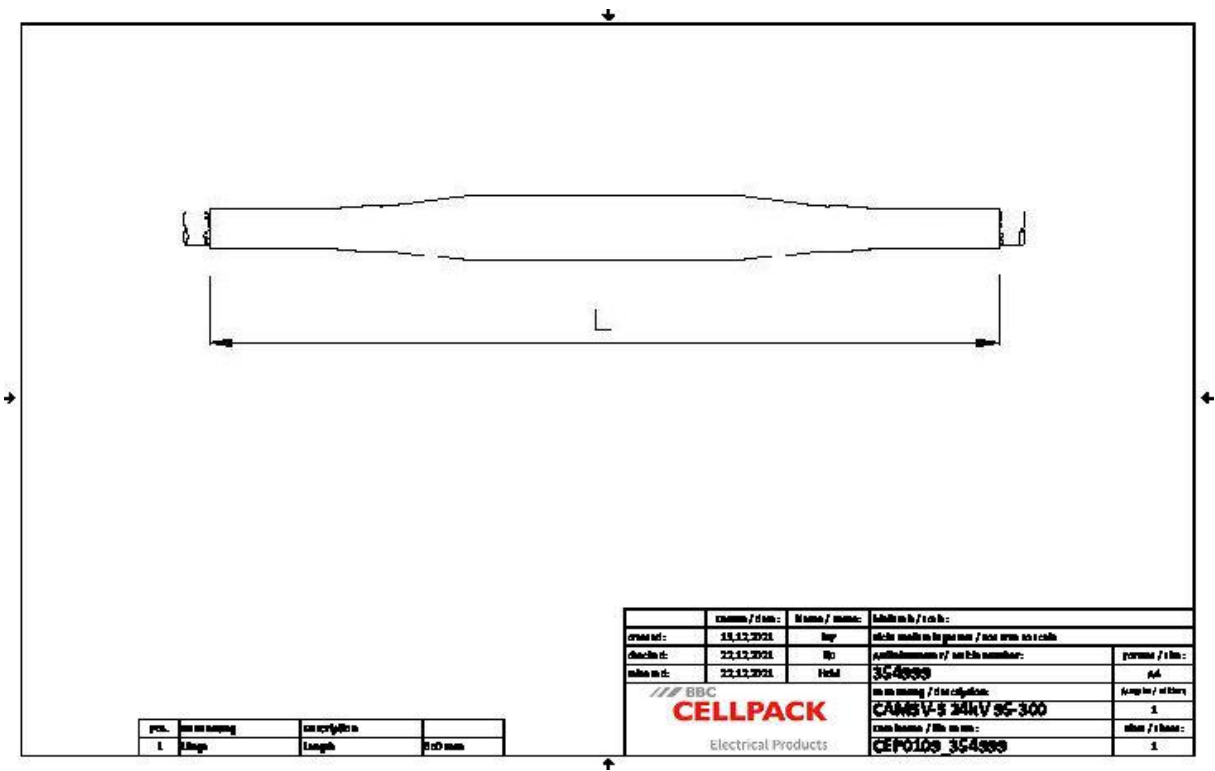
Characteristics

Slip-on silicone joint unit with integrated stress control element
Wide conductor and cross-section range
Suitable for a wide range of applications due to integrated screw connector
For both copper and aluminium conductors
Few components, compact design and reduced working length
With heat shrinkable outer protection
Quick, safe and easy assembly
Ready for immediate operation

Applications

Indoor
Outdoor
Underground
Water
Installation ducts
Ductwork

Technical data



Article name	CAMSV-S 24kV 95-300
Article number	354999
Voltage levels	U0/U (Um) 6/10 (12) kV - 12,7/22 (24) kV
Test standards	CENELEC HD 629.1
Length L	650 mm
Diameter over core insulation after removal of the outer conductive layer min	22 mm
Nominal cross section 12 kV min	150 mm²
Nominal cross section 12 kV max	300 mm²
Nominal cross section 17,5 kV min	120 mm²
Nominal cross section 17,5 kV max	300 mm²
Nominal cross section 24 kV min	95 mm²
Nominal cross section 24 kV max	300 mm²

Logistics data

Article name	CAMSV-S 24kV 95-300
Article number	354999
Delivery scope	Thick wall heat shrinkable outer tube with hot melt adhesive
	Silicone joint body with integrated inner and outer semiconductive layer (individually tested)
	Screw connector
	Copper braid tube
	Pressure springs
	Assembly instructions
Shelf life description	Unlimited shelf life
Country of origin	Germany
Customs tariff number	39269097
EAN/GTIN	4010311171531

Packaging data

Alternative unit of measure	Carton	Pal. OW
Base quantity	1	42
Base unit of measure	Piece	Piece
Length (mm)	725	1200
Width (mm)	167	800
Height (mm)	160	1100
Net weight (kg)	1.847	77.574
Gross weight (kg)	1.847	95.774