

1-core straight-through joint  
with screw connector and cold shrinkable outer protection

Contrax-Straight-through joints CAMSV-C are suitable for all 1-core polymericinsulated cables (PVC, PE, XLPE, EPR). They allow the connection of cables with different cross sections and conductor materials even with different cable designs concerning the semi-conductive layer (removable or strippable) and screen design (wire or tape screen). With screw connector.



Product description

Article name	CAMSV-C 24kV 400-630
Article number	370726
Notes	Can be used also for cables $U_m = 7,2 \text{ kV}$ , then the minimum diameter over conductor insulation has to be checked.

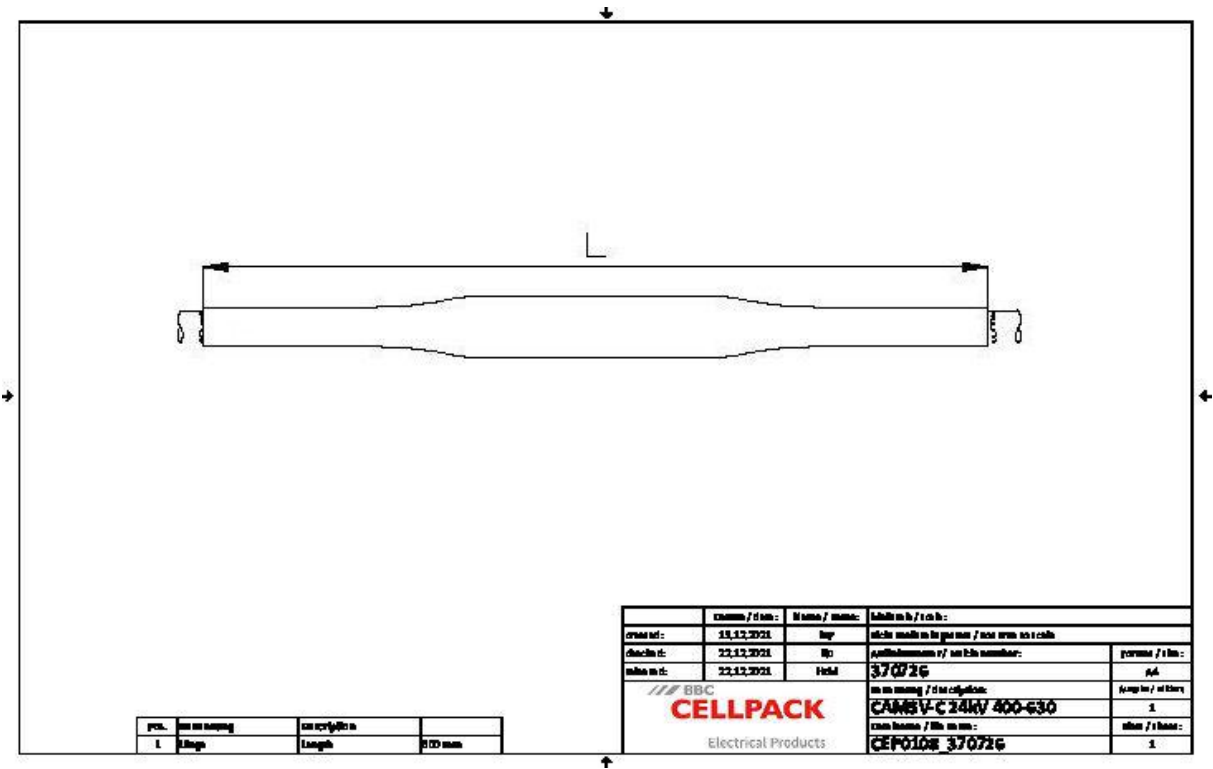
Characteristics

Slip-on silicone joint unit with integrated stress control element
Wide conductor and cross-section range
Suitable for a wide range of applications due to integrated screw connector
For both copper and aluminium conductors
Few components, compact design and reduced working length
With cold shrinkable outer protection
Quick, safe and easy assembly
Ready for immediate operation

Applications

Indoor
Outdoor
Underground
Water
Installation ducts
Ductwork

Technical data



Article name	CAMSV-C 24kV 400-630
Article number	370726
Voltage levels	U0/U (Um) 6/10 (12) kV - 12,7/22 (24) kV
Test standards	CENELEC HD 629.1
Length L	600 mm
Diameter over core insulation after removal of the outer conductive layer min	29.15 mm
Nominal cross section 12 kV min	400 mm²
Nominal cross section 12 kV max	630 mm²
Nominal cross section 17,5 kV min	400 mm²
Nominal cross section 17,5 kV max	630 mm²
Nominal cross section 24 kV min	400 mm²
Nominal cross section 24 kV max	630 mm²

## Logistics data

Article name	CAMSV-C 24kV 400-630
Article number	370726
Delivery scope	Cold shrinkable outer tube
	Silicone joint body with integrated inner and outer semiconductive layer (individually tested)
	Screw connector
	Copper braid tube
	Pressure springs
	Sealing tape
	Assembly instructions
Shelf life	36 Month
Storage temperatur max	40 °C
Storage temperatur min	0 °C
Country of origin	Germany
Customs tariff number	39269097
EAN/GTIN	4010311181660

## Packaging data

Alternative unit of measure	Carton	Pal. OW
Base quantity	1	42
Base unit of measure	Piece	Piece
Lenght (mm)	730	1200
Width (mm)	165	800
Height (mm)	157	1100
Net weight (kg)	4.079	171.318
Gross weight (kg)	4.079	189.518