

1-core indoor slip-on cable termination  
for 1-core polymeric cables

Contrax cable terminations CAE-I are suitable for all 1-core polymeric-insulated cables (PVC, PE, XLPE, EPR) with different types of semi-conductive layers (graphitecoated, removable or strippable) and screen design (wire or tape). Suitable for compression cable lugs.



Product description

Article name	CAE-I 12kV 95-240
Article number	199151
Notes	Can be used also for cables Um = 7,2 kV, then the minimum diameter over conductor insulation has to be checked.
Optional accessory	EGA earthing kit for cables with tape screen (see Connecting technology) Compression cable lugs (see Connecting technology)

Characteristics

Silicone slip-on components for quick, safe and easy assembly

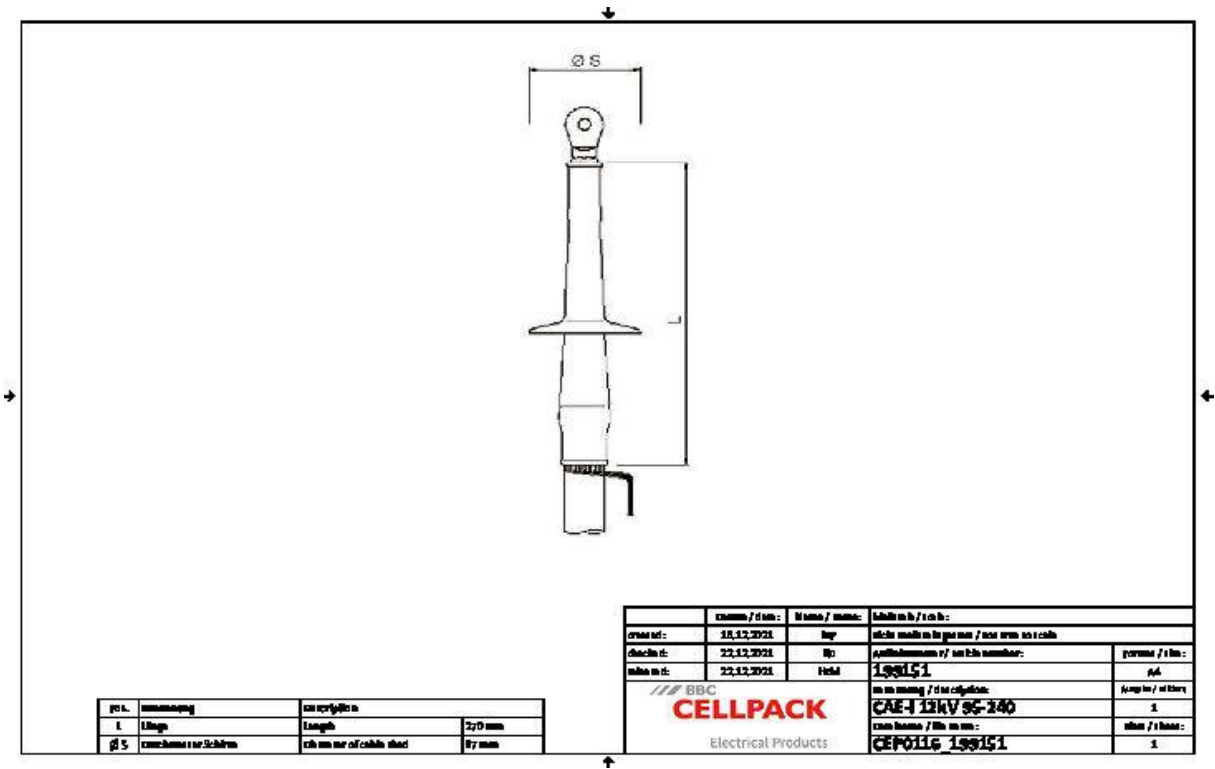
Wide cross-section range

Ready for immediate operation

Applications

Indoor

Technical data



Article name	CAE-I 12kV 95-240
Article number	199151
Voltage levels	U0/U (Um) 6/10 (12) kV - 6,35/11 (12) kV
Test standards	CENELEC HD 629.1
Length L	270 mm
Diameter over core insulation after removal of the outer conductive layer min	17.3 mm
Number of sheds per phase	1 Pieces
Diameter shed	87 mm
Nominal cross section 12 kV min	95 mm²
Nominal cross section 12 kV max	240 mm²

## Logistics data

Article name	CAE-I 12kV 95-240
Article number	199151
Delivery scope	3 One-piece slip-on silicone cable terminations with integrated stress control element
	Silicone tubes
	Sealing tape
	Assembly material
	Assembly instructions
Shelf life description	Unlimited shelf life
Country of origin	Germany
Customs tariff number	85469090
EAN/GTIN	4010311054407

## Packaging data

Alternative unit of measure	Carton	Pal. OW
Base quantity	1	84
Base unit of measure	Piece	Piece
Length (mm)	382	1200
Width (mm)	192	800
Height (mm)	132	1130
Net weight (kg)	0.814	68.376
Gross weight (kg)	0.814	86.576