

1-core outdoor slip-on cable termination
for 1-core polymeric cables

Contrax cable terminations CAE-F are suitable for all 1-core polymeric-insulated cables (PVC, PE, XLPE, EPR) with different types of semi-conductive layers (graphitecoated, removable or strippable) and screen design (wire or tape). Suitable for compression cable lugs.



Product description

| | |
|--------------------|--|
| Article name | CAE-F 12kV 95-240 |
| Article number | 199184 |
| Notes | Can be used also for cables Um = 7,2 kV, then the minimum diameter over conductor insulation has to be checked. |
| Optional accessory | EGA earthing kit for cables with tape screen (see Connecting technology) Compression cable lugs (see Connecting technology) |

Characteristics

Silicone slip-on components for quick, safe and easy assembly

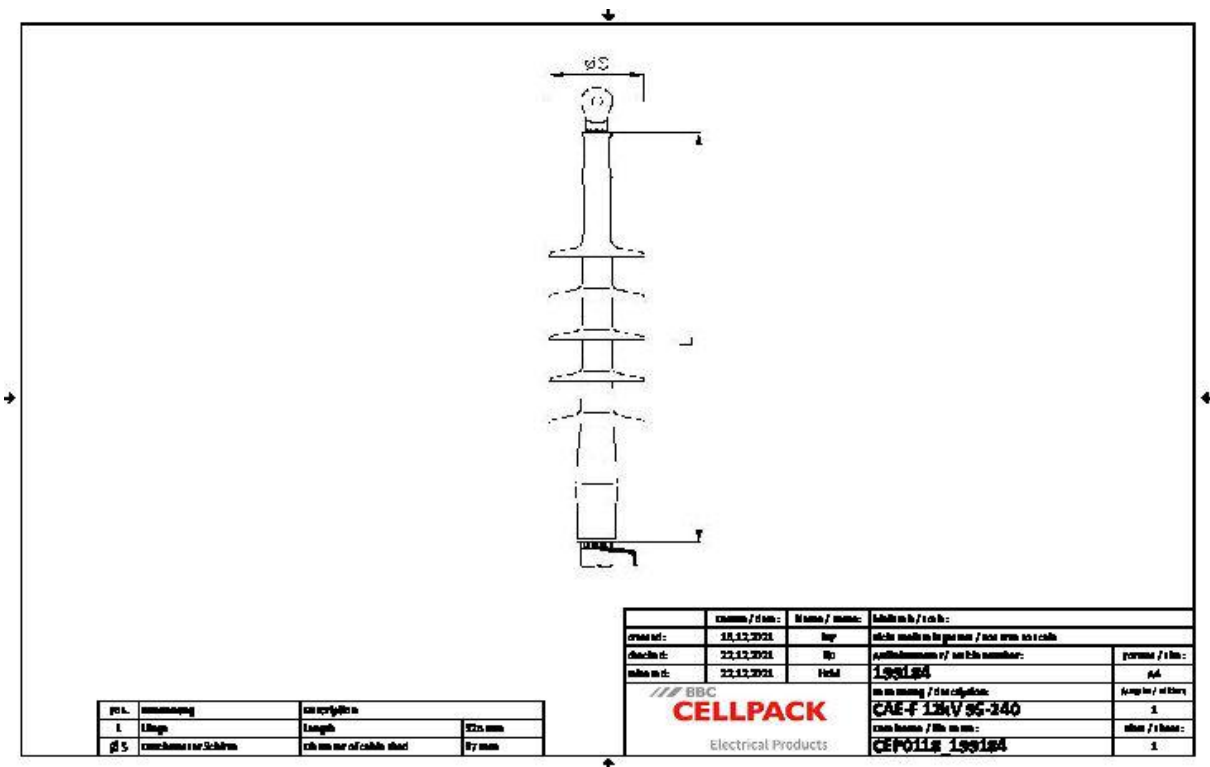
Wide cross-section range

Ready for immediate operation

Applications

Outdoor

Technical data



| | |
|---|--|
| Article name | CAE-F 12kV 95-240 |
| Article number | 199184 |
| Voltage levels | U0/U (Um) 6/10 (12) kV - 6,35/11 (12) kV |
| Test standards | CENELEC HD 629.1 |
| Length L | 325 mm |
| Diameter over core insulation after removal of the outer conductive layer min | 17.3 mm |
| Number of sheds per phase | 4 Pieces |
| Diameter shed | 87 mm |
| Nominal cross section 12 kV min | 95 mm ² |
| Nominal cross section 12 kV max | 240 mm ² |

Logistics data

| | |
|------------------------|--|
| Article name | CAE-F 12kV 95-240 |
| Article number | 199184 |
| Delivery scope | 3 One-piece slip-on silicone cable terminations with integrated stress control element |
| | Silicone tubes |
| | Sealing tape |
| | Assembly material |
| | Assembly instructions |
| Shelf life description | Unlimited shelf life |
| Country of origin | Germany |
| Customs tariff number | 85469090 |
| EAN/GTIN | 4010311054728 |

Packaging data

| | | |
|-----------------------------|--------|---------|
| Alternative unit of measure | Carton | Pal. OW |
| Base quantity | 1 | 36 |
| Base unit of measure | Piece | Piece |
| Length (mm) | 420 | 1200 |
| Width (mm) | 250 | 800 |
| Height (mm) | 140 | 1130 |
| Net weight (kg) | 1.251 | 45.036 |
| Gross weight (kg) | 1.251 | 63.236 |