

## Screw branch clamp Al-Cu

for cast resin straight-through and branch

Screw branch clamps suitable for connecting and branching aluminium and copper conductors.



### Product description

Article name	AK 16
Article number	446314
Notes	Main cable must not be cut.

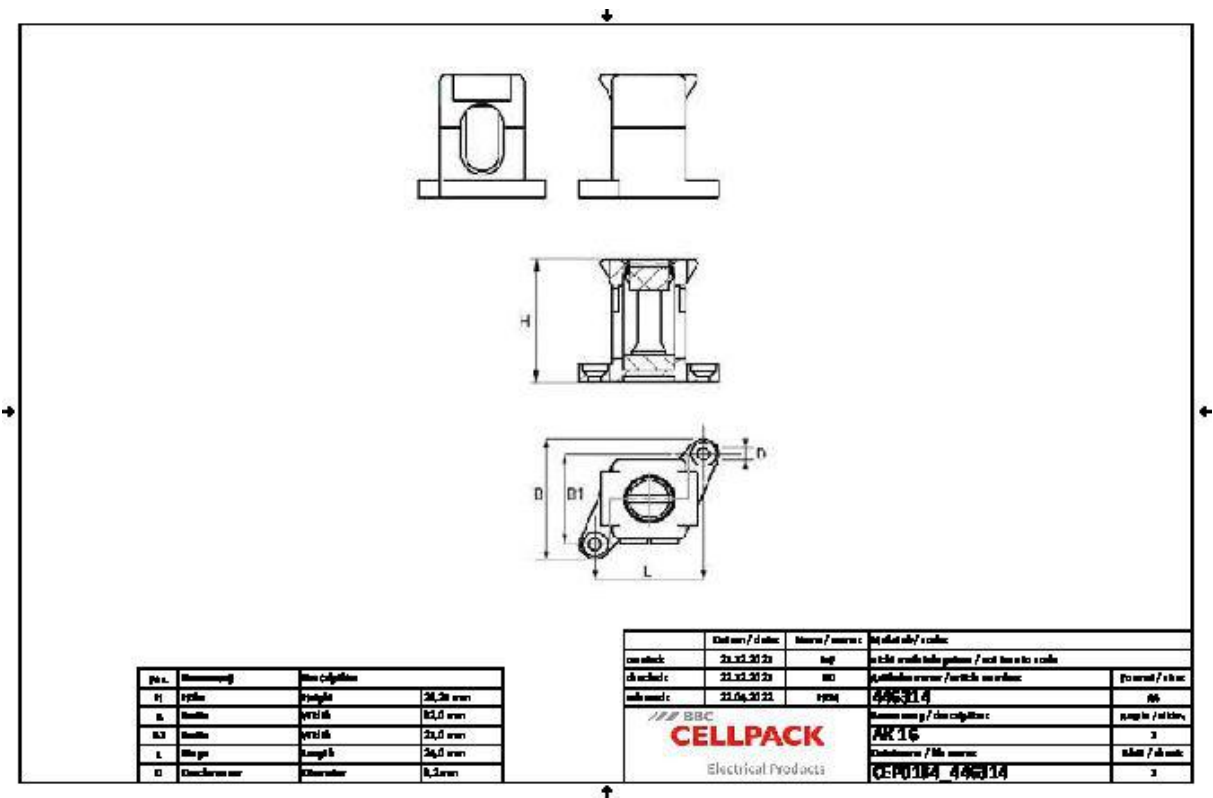
#### Characteristics

Brass clamp tin-plated

Divisible

Halogen-free

Technical data



Article name	AK 16
Article number	446314
Test standards	EN 60998-2
Selection Note	new
Nominal cross section solid main cable min	6 mm <sup>2</sup>
Nominal cross section solid main cable max	16 mm <sup>2</sup>
Nominal cross section solid branch cable min	6 mm <sup>2</sup>
Nominal cross section solid branch cable max	16 mm <sup>2</sup>
Nominal cross section stranded main cable min	4 mm <sup>2</sup>
Nominal cross section stranded main cable max	10 mm <sup>2</sup>
Nominal cross section stranded branch cable min	4 mm <sup>2</sup>
Nominal cross section stranded branch cable max	10 mm <sup>2</sup>
Tightening torque	2.5 Nm
Length L	24 mm
Width B	32 mm
Width B1	21 mm
Height H	26.25 mm
Diameter D	3.2 mm

## Logistics data

Article name	AK 16
Article number	446314
Delivery scope	12 Screw branch clamps
Country of origin	Spain
Customs tariff number	85369010
EAN/GTIN	4010311198521

## Packaging data

Alternative unit of measure	Bag1
Base quantity	1
Base unit of measure	Piece
Lenght (mm)	400
Width (mm)	150
Height (mm)	50
Net weight (kg)	0.219
Gross weight (kg)	0.219